

TECHNICAL MANUAL
2025+ TROY CARBON



BUILD GX AXS
COLOR INCOGNITO

WE MAKE RIDERS

DEVINCI



ABOUT OUR MANUALS

Like many sports, cycling involves risk of injury and accidents, so you must be fully aware of these risks. Neither the manufacturer, the retailer, nor the person who sold you the bike, nor the people who maintain the trails are responsible for these risks. As you are solely responsible, it is, therefore, essential that you read and fully understand all the parts contained in this manual.

To enjoy maximum safety and enjoyment right from the get go, it is important that you are familiar with your new bike, its handling and its possibilities. It is your duty to maintain your bike well and reduce the risk of injury. Biking can be a dangerous activity, even under the best conditions. These are risks associated with using a bicycle that cannot be predicted or avoided. These are the sole responsibility of the cyclist.

YOUR AUTHORIZED DEVINCI RETAILER

Your authorized Devinci retailer is at your service to guide your choices of bike and accessories which are best suited to the style of biking you wish to perform. This will help you maintain your equipment in good condition so that you can take full advantage of your investment. The staff at your authorized Devinci retailer have the training, experience and tools to carry out the repairs and provide you with reliable advice.

However, your authorized Devinci retailer cannot make decisions for you, and cannot be held responsible for your lack of knowledge, experience, qualification or common sense. However, it will take the necessary time to explain the operation of a component or to help you choose an accessory that meets your specific needs.

For further information, please see the Devinci's User Manual available on www.Devinci.com or ask your authorized Devinci retailer. He will take the time to answer any questions you may have and will advise you with great pleasure.

TABLE OF CONTENTS

TECHNICAL SPECIFICATIONS	4
GEOMETRY	8
CABLE ROUTING	12
SERVICE KITS	22

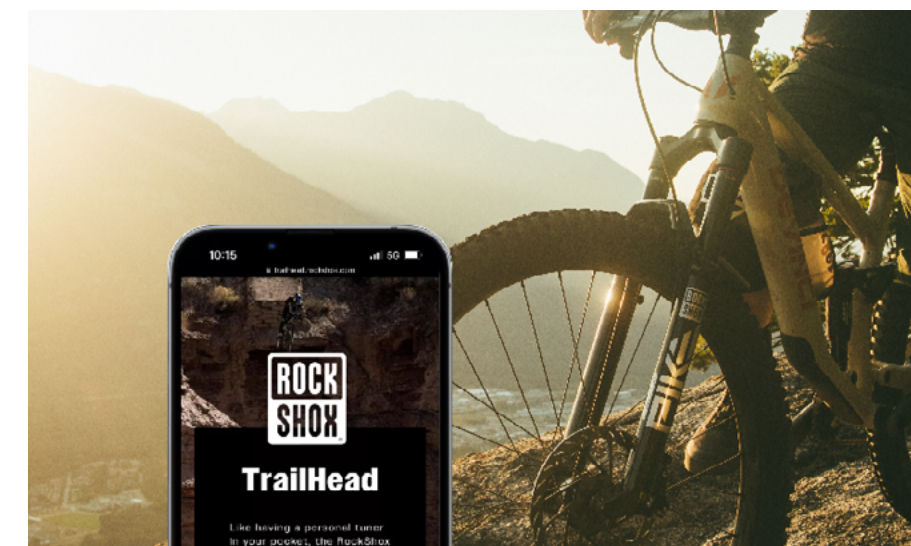
TECHNICAL SPECIFICATIONS

FORK TRAVEL ALTERATION



The Devinci Troy carbon is specifically designed and tested for use with a 160 mm travel front suspension fork. Any modifications to the fork travel or style, including but not limited to a 170 mm travel fork, are not recommended and will void the original frame warranty.

The maximum allowable axle-to-crown length for the Devinci Troy carbon is 576 mm. Exceeding this measurement may compromise the bike's performance and safety, potentially leading to catastrophic frame failure and serious personal injury.



SUSPENSION SET UP

Suspension specialist in your pocket! The RockShox TrailHead app is a starting point for dialing in your suspension settings, ensuring a perfect ride experience.

WEB: [START](#)

APPLE STORE: [DOWNLOAD THE APP](#)

GOOGLE STORE: [DOWNLOAD THE APP](#)

TROY CARBON
FRAME

HEADTUBE DIMENSIONS		
1. UPPER (S.H.I.S)	ZS44	1-1/8" Zerostack
2. LOWER (S.H.I.S)	ZS56	1.5" Zerostack
BOTTOM BRACKET		
3. STANDARD	BSA 73mm	
4. ISCG MOUNT	ISCG 05 3 tabs	
5. MINIMUM Q FACTOR	168	
DRIVETRAIN		
6. REAR HUB SPACING (OVER LOCKNUT DIMENSION)	TA 12x148 Boost	
7. MAX & MIN CHAINRING	34T	28T
8. SMALLEST COG COMPATIBLE	12s 9T	
9. BIGGEST COG COMPATIBLE	12s 52T	
10. RECOMMENDED CHAINLINE	55mm	
SEATPOST AND SEATCLAMP		
11. SEAT TUBE INSIDE DIAMETER (ID)	31.6 mm	
12. SEAT TUBE OUTSIDE DIAMETER (OD)	36 mm	
13. DROPPER POST COMPATIBLE	Yes Fully internal	
BRAKES		
14. BRAKE MOUNT (FRAME)	200 mm direct	
15. MAX ROTOR SIZE AVAILABLE (FRAME))	220 mm	
ACCESSORIES		
16. WATER BOTTLE (FRAME)	Yes (16 oz.)	
17. STORAGE SYSTEM	Yes SHED	
18. PROTECTORS	Downtube, chainstay and seatstay	
GEOMETRY INPUTS (BASED ON MEDIUM SIZE)		
TROY CARBON FORK 160 MM TRAVEL 150MM		
19. FRONT SUSPENSION (TRAVEL & SAG)	160 mm	25%
20. REAR SUSPENSION (TRAVEL & SAG)	150 mm	30%
21. FORK (AXLE-TO-CROWN [A] & OFFSET [B])	A. 571mm	B. 44mm
23. FRONT AND REAR WHEEL MAX ETRTO	63-622	63-622
24. REAR SUSPENSION (DIMENSIONS)	185 x 55 mm	
25. PIGGYBACK SHOCK COMPATIBILITY	Yes	
26. SPRING TYPE COMPATIBILITY	Air & Coil	
28. UPPER SHOCK HARDWARE DIMENSION	Trunnion	
29. LOWER SHOCK HARDWARE DIMENSION	40 x 10 mm	

* DISCLAIMER
We are testing many different tires to establish a clearance number that cover a wide spectrum of tires with appropriate frame clearance. However, it is impossible for us to test all tires and rim combination available on the market, so be mindful that some combinations may result in slight rubbing if higher than 68mm in actual width.

SIZES AVAILABLE
S | M | L | XL

13 MAX INSERTION LENGTH
SMALL - 240mm
MEDIUM - 280mm
LARGE - 305mm
X-LARGE - 330mm

1
2
19
23
21A
21B
24
20
18
15
14
12
11
8 9
7
6
3
4

1

2

THE STORAGE DOOR MUST BE PROPERLY ENGAGED TO ENSURE ITS ATTACHMENT AT THE DOWNTUBE LEVEL.

A "CLICK" WILL ACCOMPANY THE CLOSURE WHEN THE DOOR IS SECURELY LOCKED ONTO THE INNER SURFACE OF THE DOWNTUBE.

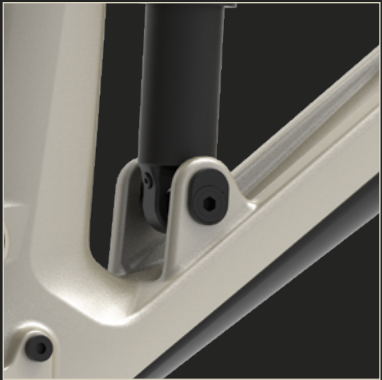
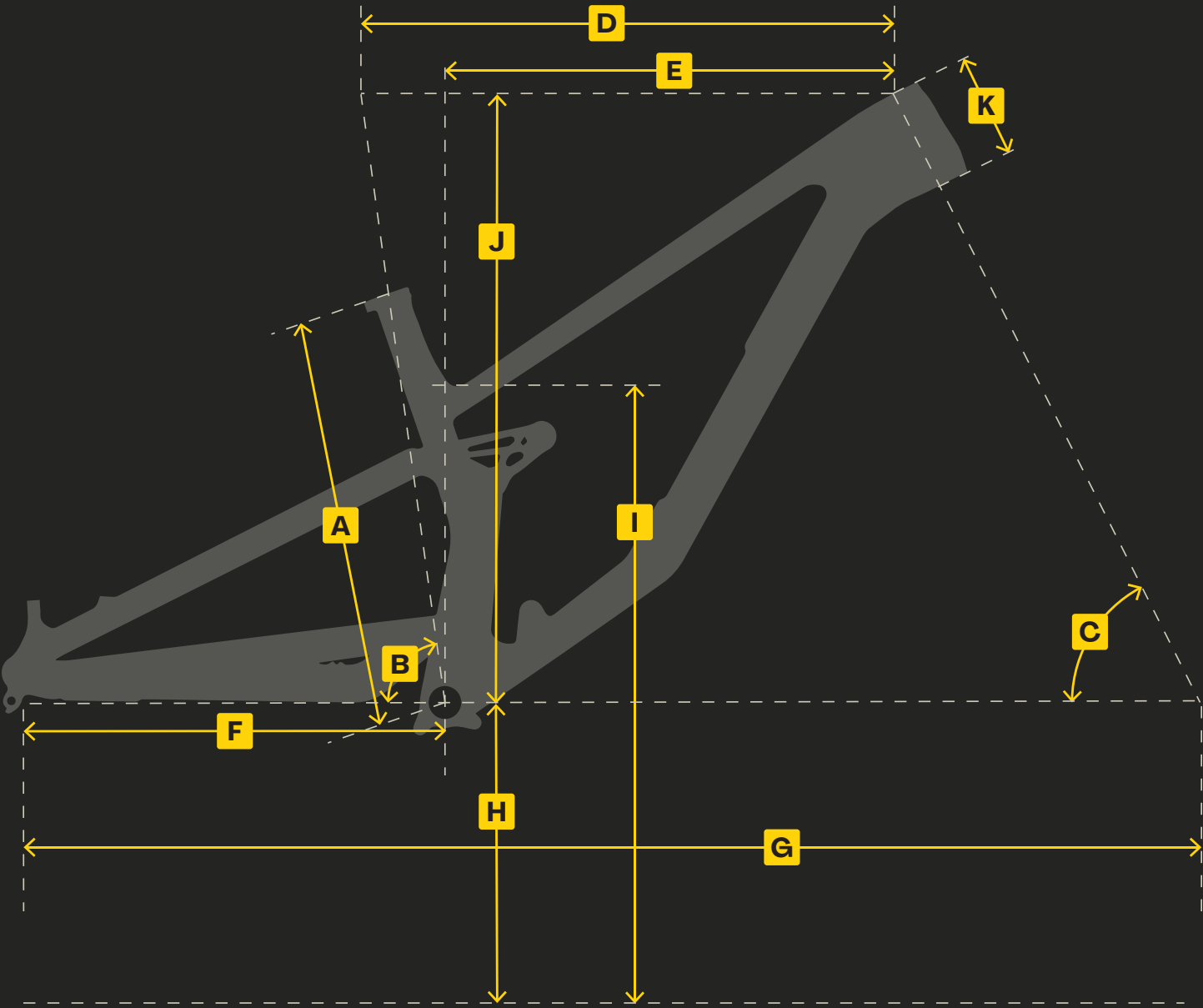
MAKE SURE THE LATCH IS CORRECTLY PRESSED BEFORE EACH RIDE (ACCORDING TO IMAGE 2).

GEOMETRY



GEOMETRY

TROY CARBON



MX


29"

29"

	SMALL 160 CM - 170 CM	MEDIUM 169 CM - 179 CM	LARGE 178 CM - 188 CM	X-LARGE 187 CM - 198 CM
A - ST (MM)	390	420	450	470
B - SA (DEG)	78.1	77.8	76.8	76.2
C - HA (DEG)	64.0	64.0	64.0	64.0
D - TT (MM)	568	594	631	656
E - REACH (MM)	440	460	480	500
F - CS (MM)	432	432	437	442
G - WB (MM)	1204	1228	1258	1287
H - BBH (MM)	343	343	343	343
I - SOH (MM)	708	708	708	708
J - STACK (MM)	612	622	631	640
K - HT (MM)	95	105	115	125

A - ST (MM)	390	420	450	470
B - SA (DEG)	78.1	77.8	76.4	76.2
C - HA (DEG)	64.0	64.0	64.0	64.0
D - TT (MM)	568	594	631	656
E - REACH (MM)	440	460	480	500
F - CS (MM)	435	435	440	445
G - WB (MM)	1206	1230	1260	1289
H - BBH (MM)	343	343	343	343
I - SOH (MM)	708	708	708	708
J - STACK (MM)	612	622	631	640
K - HT (MM)	95	105	115	125

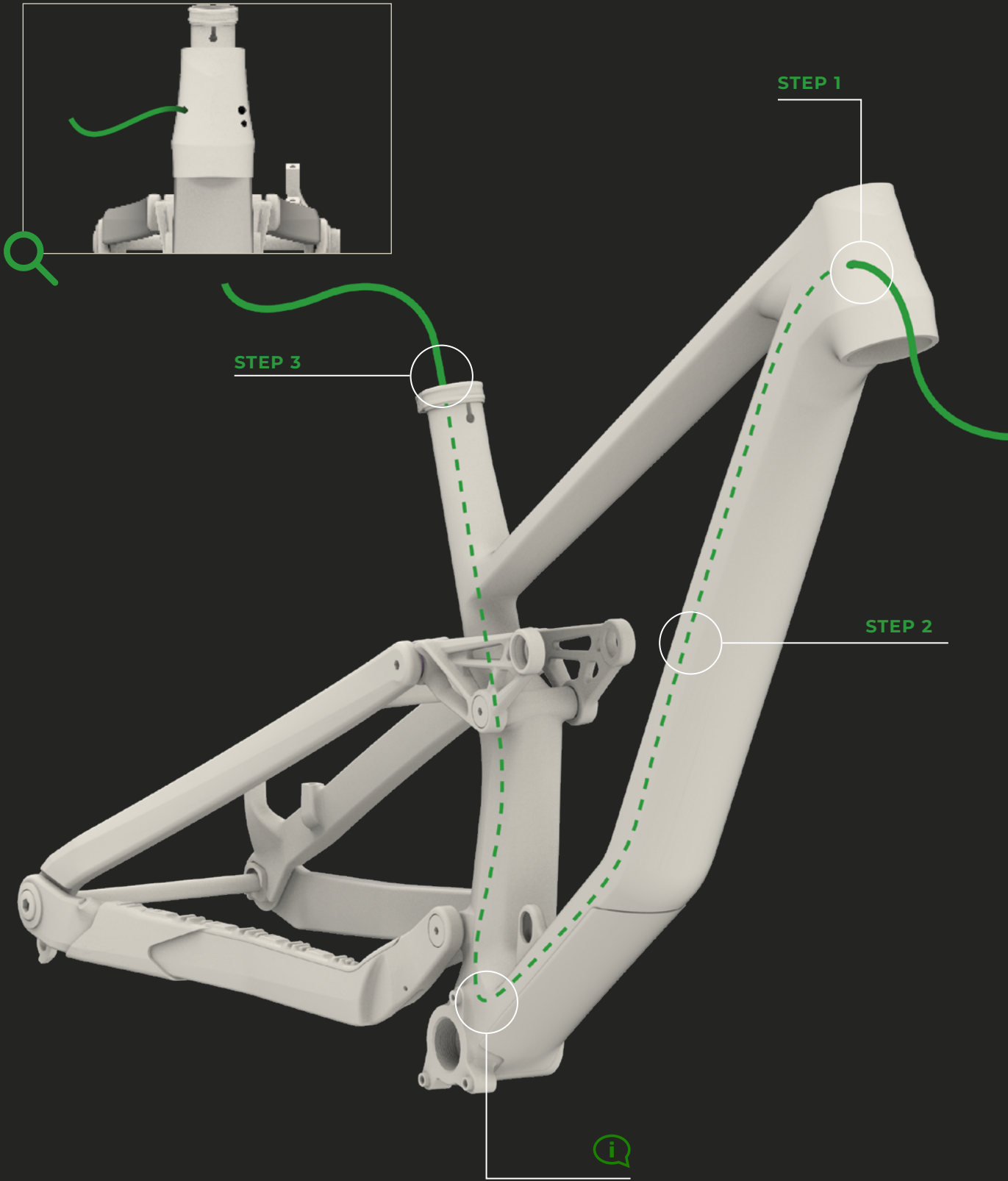
A - ST (MM)	390	420	450	470
B - SA (DEG)	78.9	78.6	77.6	77.0
C - HA (DEG)	64.7	64.7	64.7	64.7
D - TT (MM)	567	593	630	655
E - REACH (MM)	449	469	488	508
F - CS (MM)	432	432	437	442
G - WB (MM)	1204	1228	1258	1287
H - BBH (MM)	354	354	354	354
I - SOH (MM)	718	718	718	718
J - STACK (MM)	606	615	624	633
K - HT (MM)	95	105	115	125



CABLE ROUTING

SEAT POST HOUSING

TROY CARBON



STEP 1

Insert the seatpost housing into the upper right internal conduit located in the diagonal tube.

STEP 2

Gently slide the housing through the internal conduit.

STEP 3

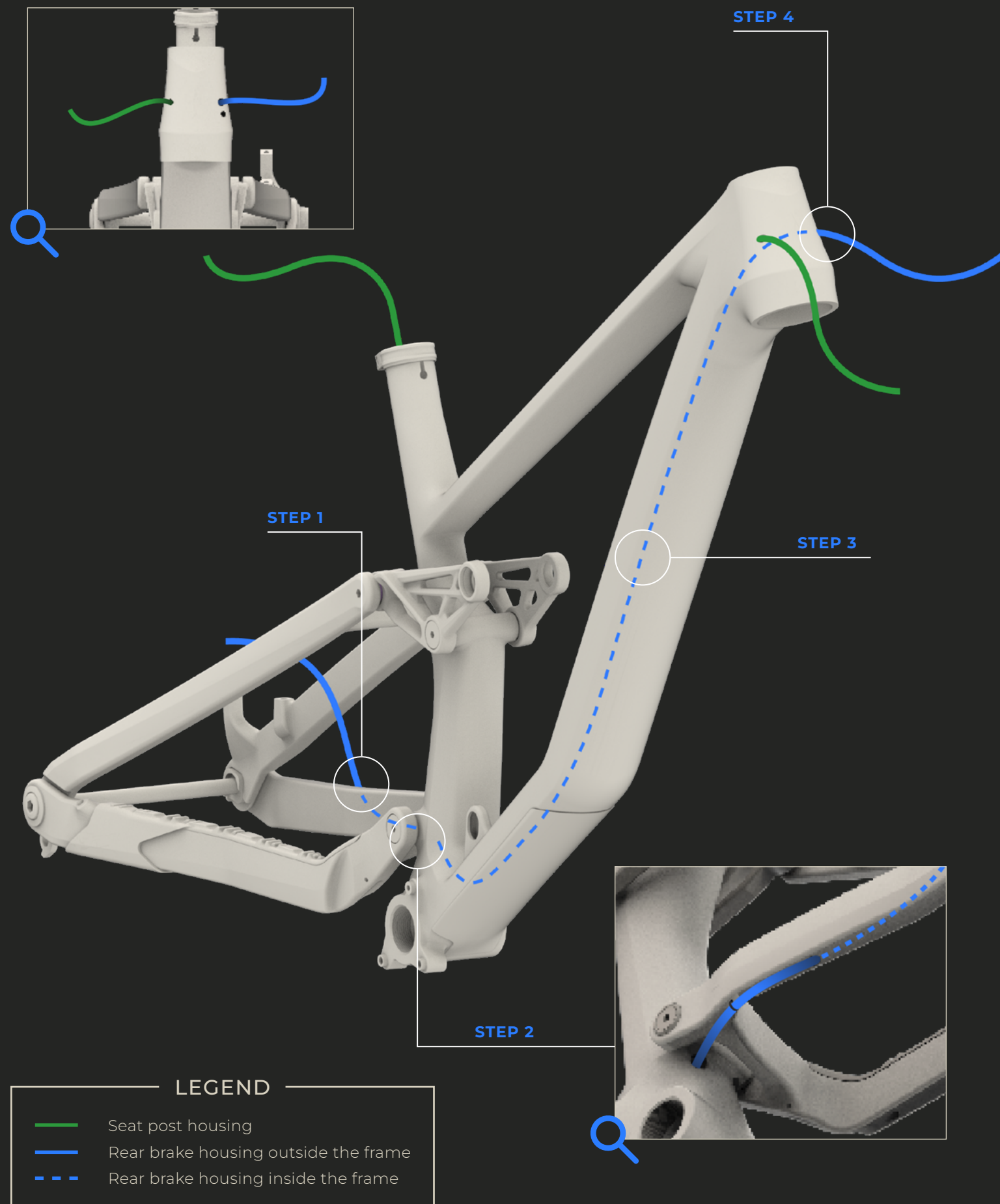
Pull the housing out of the frame through the seat tube.



If you encounter difficulty inserting the housing into the internal conduit for the seatpost, thread a cable through the housing to help guide it, applying light tension to the cable until it exits through the seat tube.

LEGEND

- Seat post housing outside the frame
- - - Seat post housing inside the frame



REAR BRAKE HOUSING

TROY CARBON

STEP 1

Insert the rear brake housing into the upper left cavity located on top of the chainstay.

STEP 2

Pull the brake housing out from under the chainsaty on the left. Insert the housing into the internal conduit located at the rear left of the seatpost tube.

STEP 3

Gently slide the housing through the internal conduit.

STEP 4

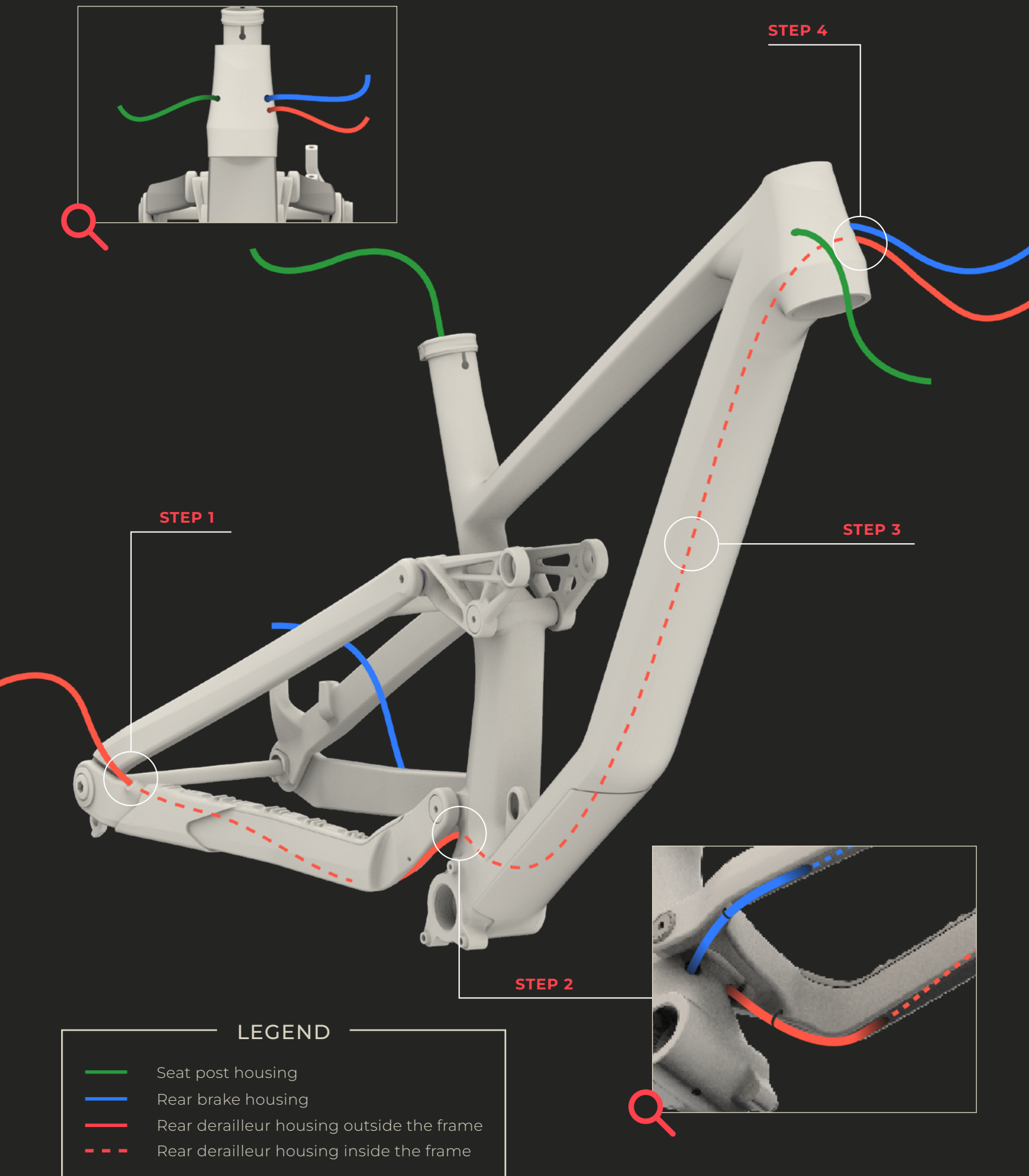
Pull the brake housing out of the upper left cavity of the diagonal tube.



Make sure the housing is inside the chainsaty before connecting the housing to the brake.

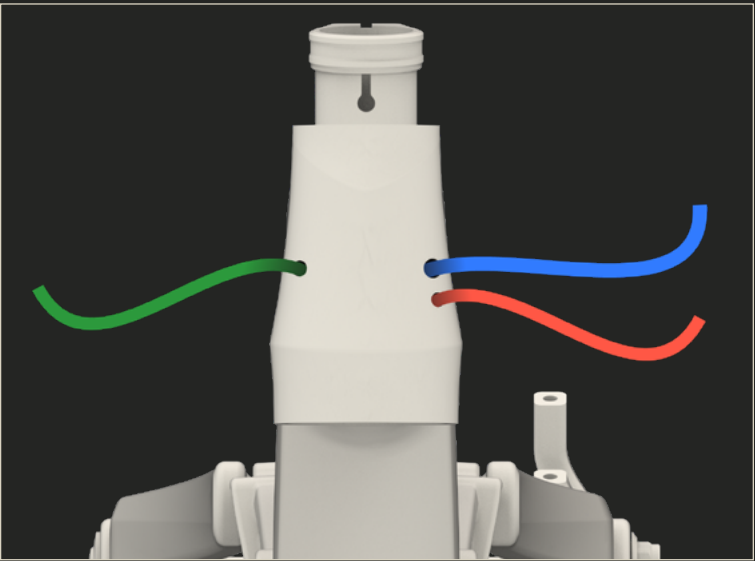
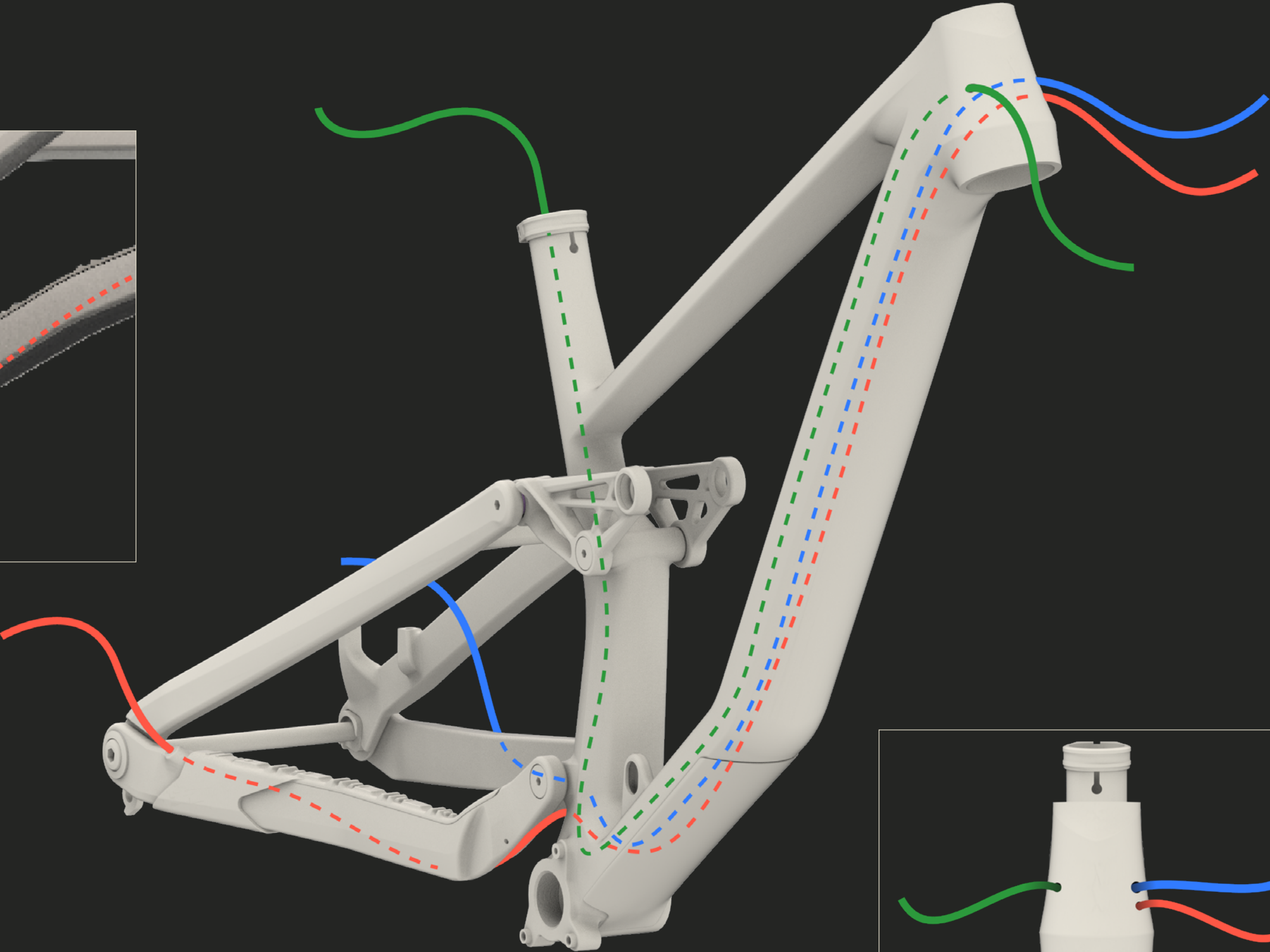
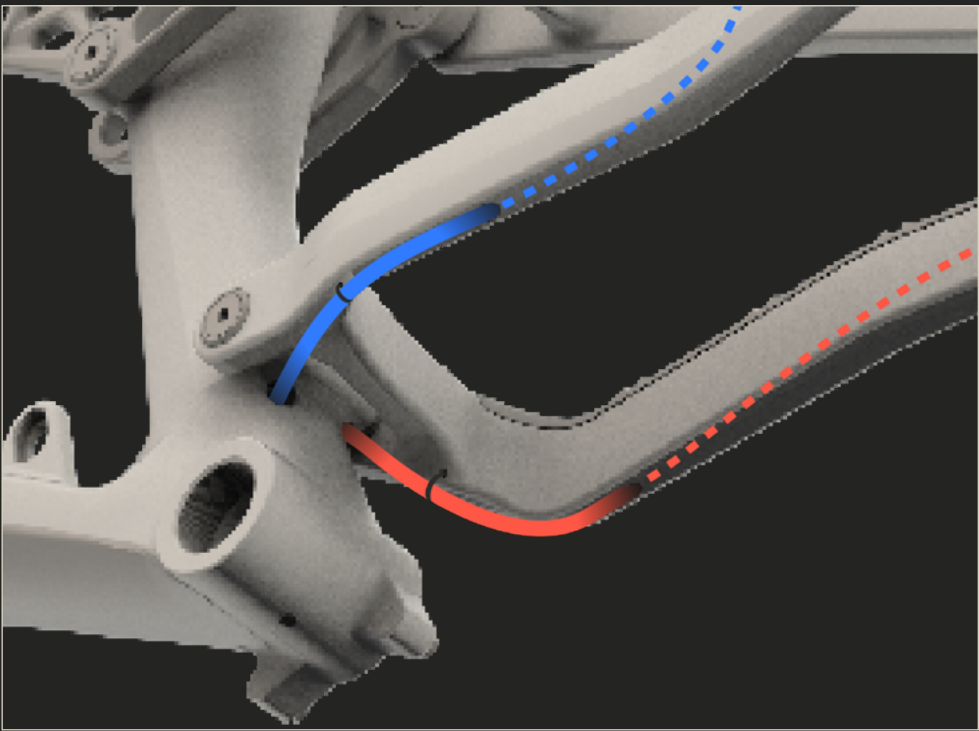
REAR DERAILLEUR HOUSING

TROY CARBON



OVERVIEW

TROY CARBON



LEGEND

- Seatpost housing
- Rear brake housing
- Rear derailleur housing
- Housing outside the frame
- - - Housing inside the frame

SERVICE KITS



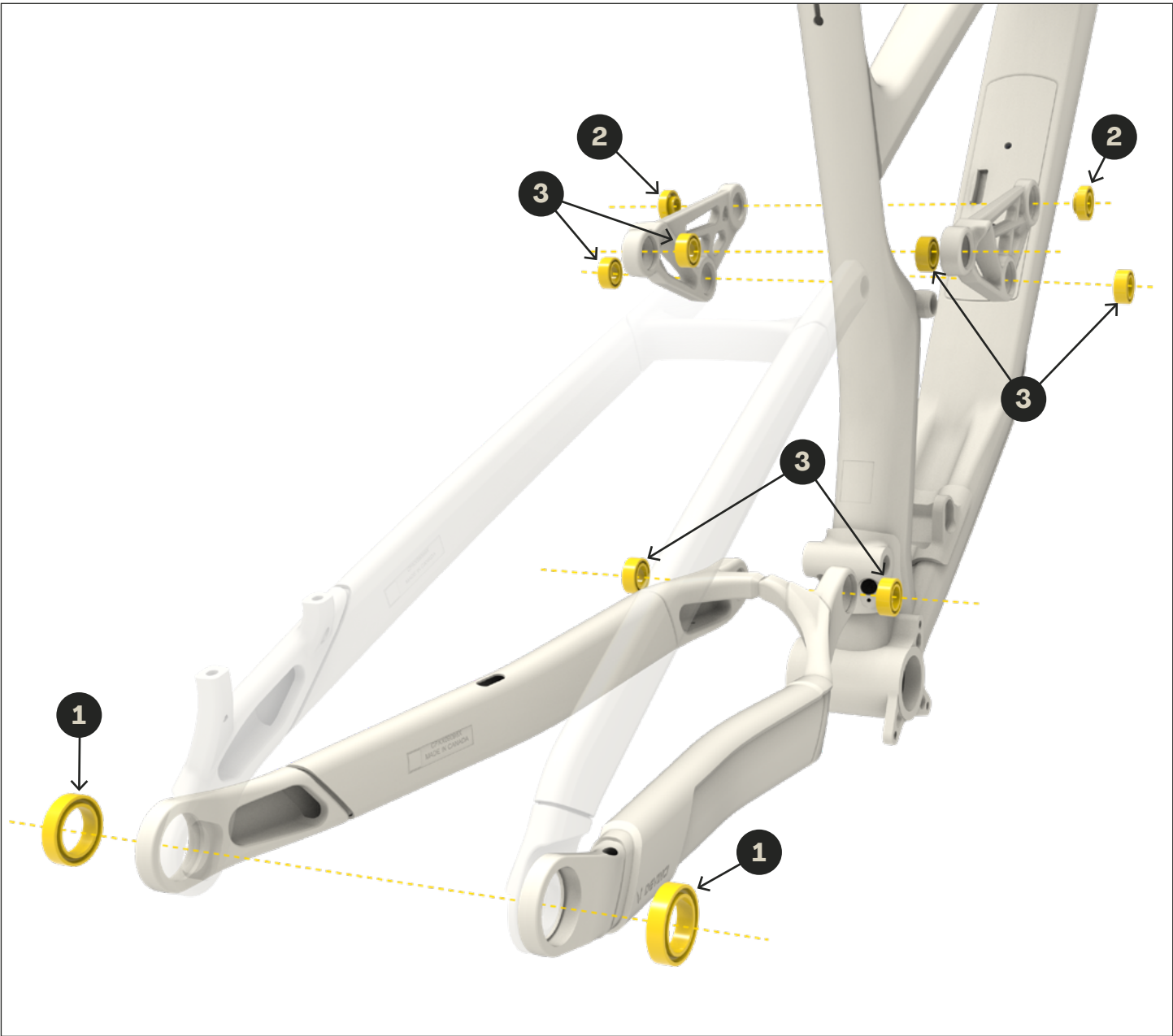
SERVICE KITS

TROY CARBON

KFC08902

BEARING KIT E-TROY LITE, TROY ST, TROY

ITEMS	PART #	DESCRIPTION	QTY
1	MFP21016	BALL BEARING MR20307 20x30x7; STD TYPE, DOUBLE LIP	2
2	MFP24014	BEARING 6900 WITH EXTENDED INNER CAGE	2
3	MFP19001	BALL BEARING 3801 LLU MAX 12x21x8	6

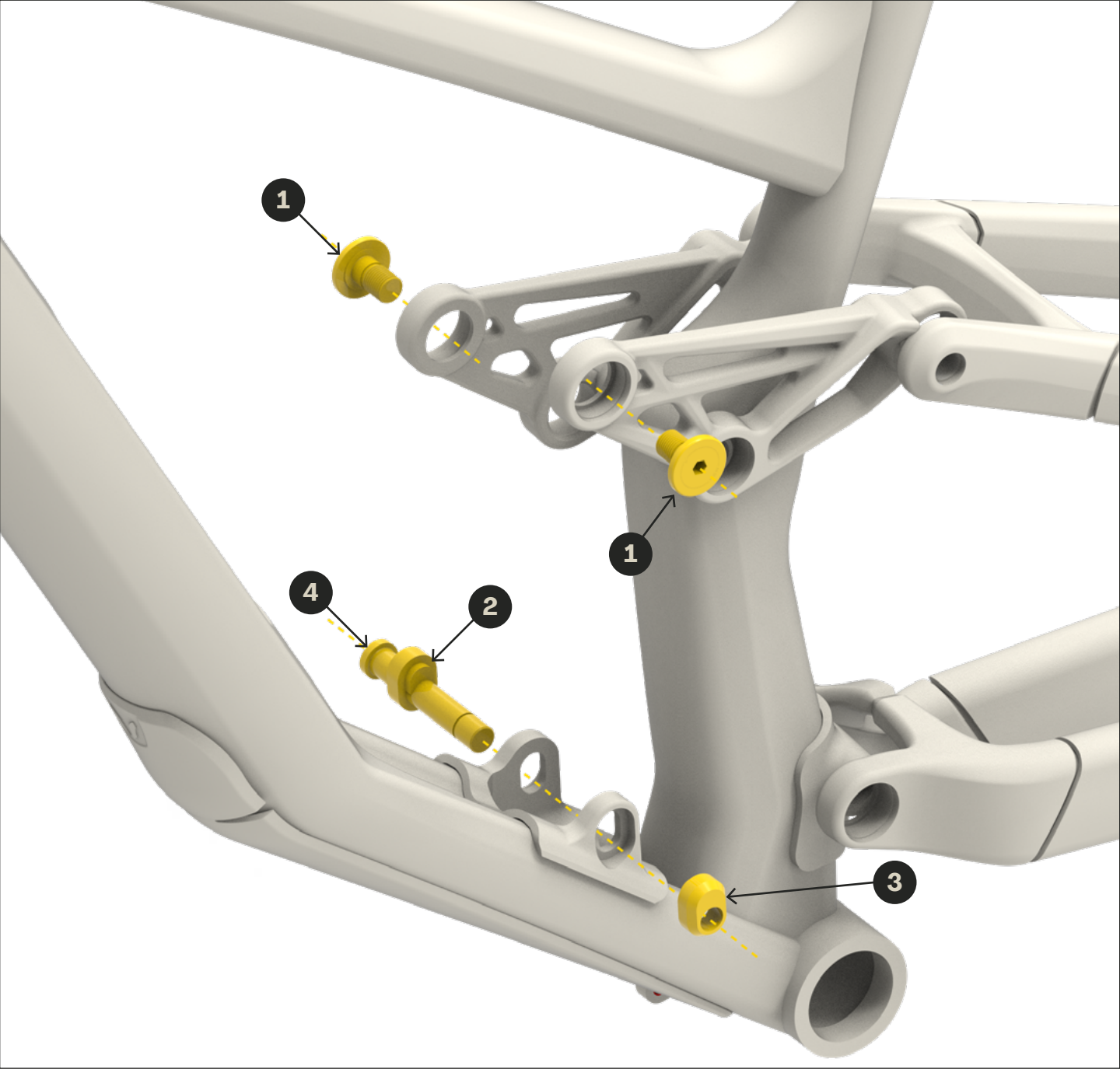


*THE FRAME IS FOR EXAMPLE ONLY.

KFC09001

SHOCK BOLT KIT TROY ST, TROY

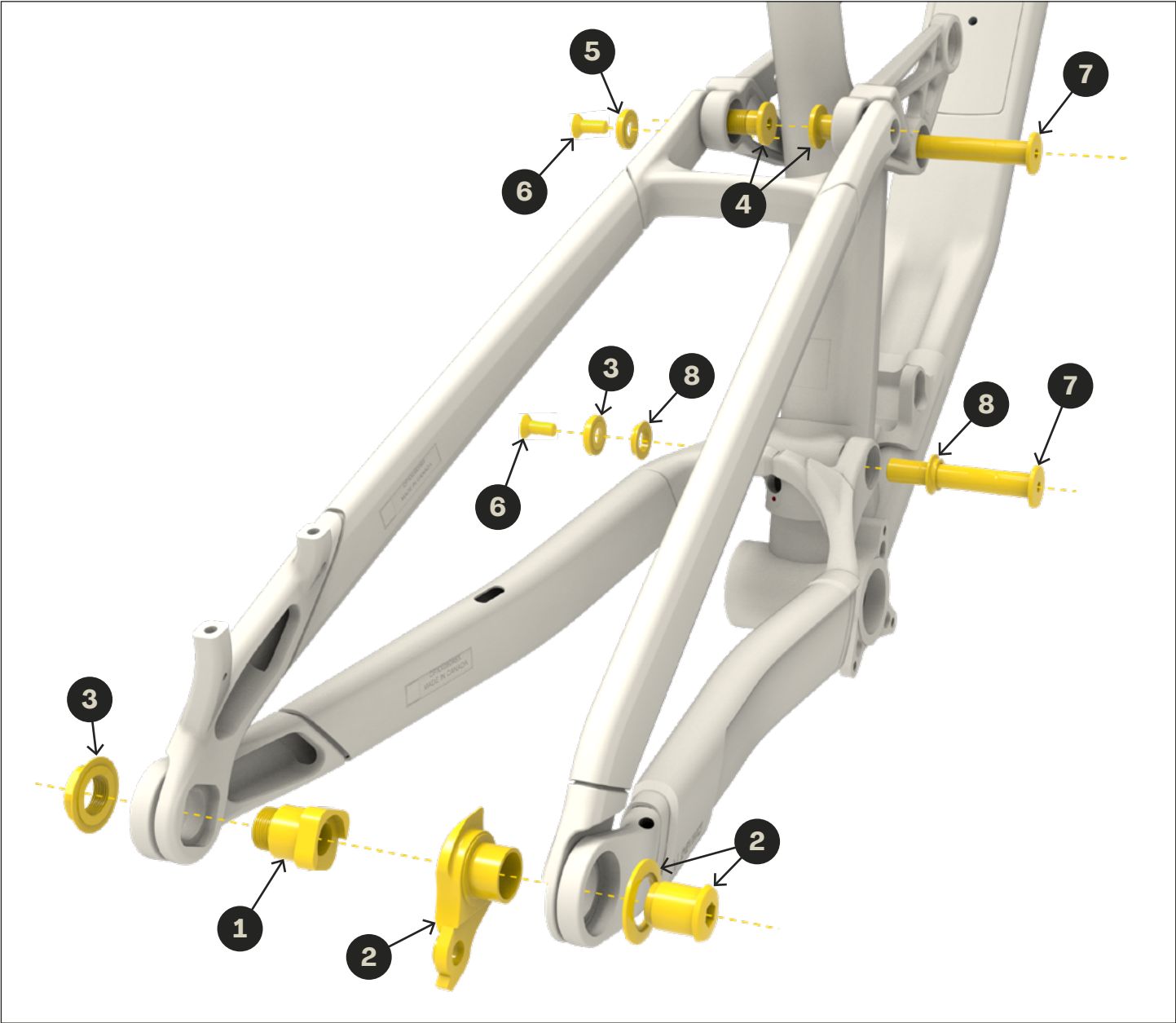
ITEMS	PART #	DESCRIPTION	QTY
1	MFV24009	SOCKET CAP SCREW M10x1.0 X 16mm	2
2	MFP25008	ADJUSTER 5.5mm FOR 10mm SCREW	1
3	MFP25009	ADJUSTER 5.5mm M10x1.0	1
4	MFV25001	SOCKET CAP SCREW M10x1.0 X 59	1



* THE FRAME IS FOR EXAMPLE ONLY.

KFC09002
PIVOT KIT TROY ST, TROY

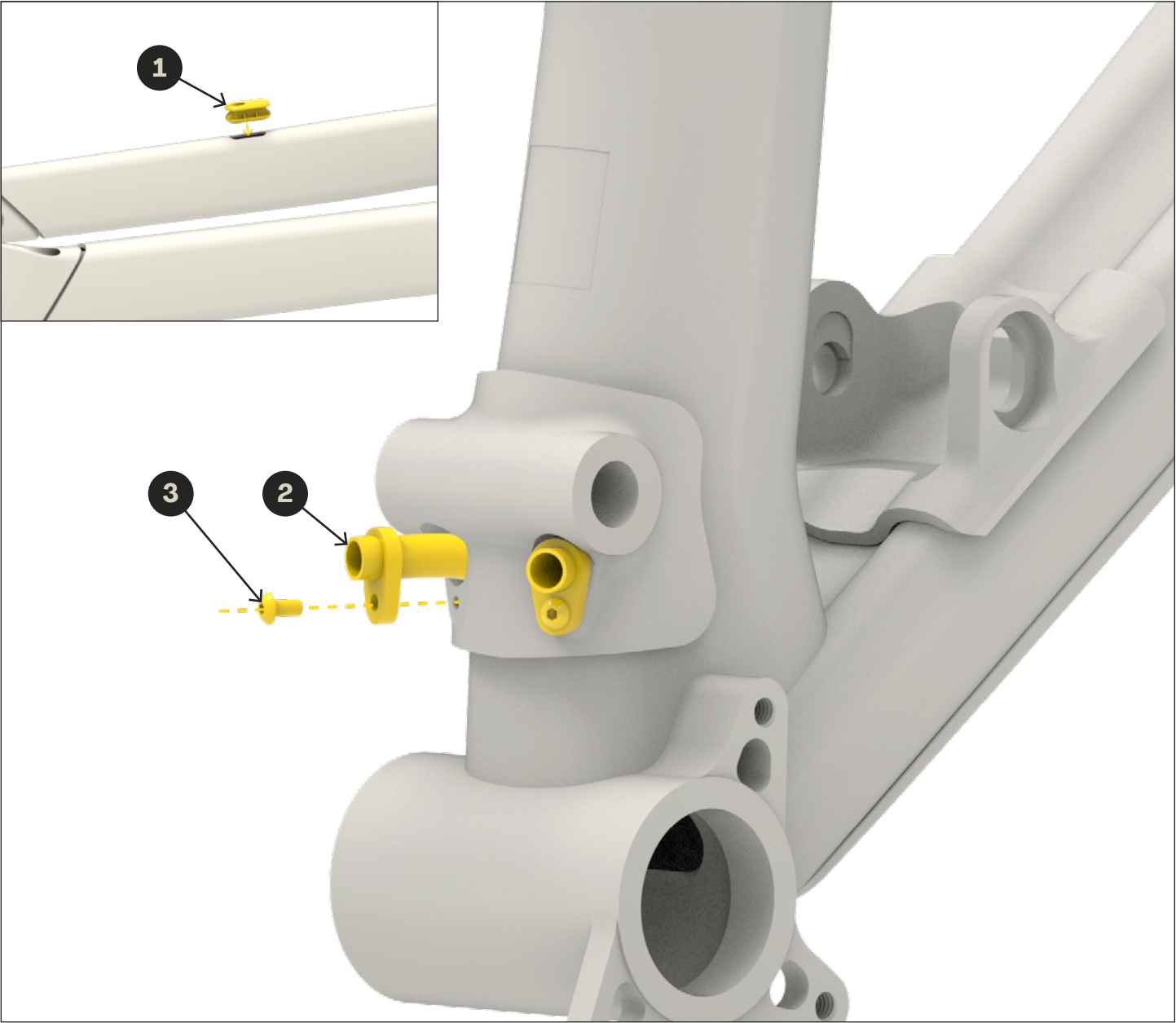
ITEMS	PART #	DESCRIPTION	QTY
1	MFP24008	DROPOUT PIVOT LEFT SHAFT 20mm	1
2	MFD21001	HANGER UDH	1
3	MFP24009	PIVOT NUT FOR MR 20307 BEARING	1
4	MFV24016	SOCKET CAP SCREW M12x1.0 X 21mm	2
5	MFV24008	PIVOT WASHER	2
6	MFV24012	SOCKET FLAT SCREW M8x1.25 X 20m	2
7	MFP24010	SHAFT 12x73	2
8	MFP24012	PIVOT SPACER 12x16x4	2



*THE FRAME IS FOR EXAMPLE ONLY.

KFC09003
CABLE GUIDE KIT TROY ST, TROY

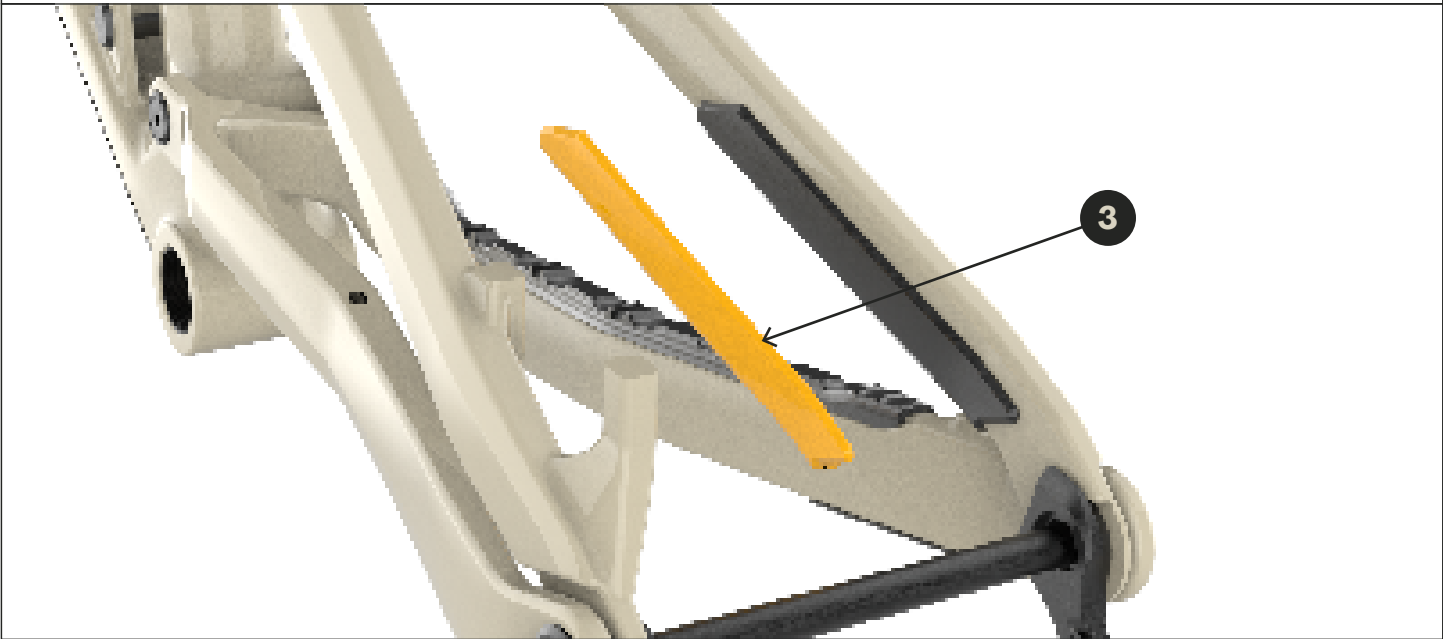
ITEMS	PART #	DESCRIPTION	QTY
1	MFB19008	CABLE GUIDE 5mm	1
2	MFB25001	CABLE GUIDE FOR 081-090	2
3	MFV23016	ALLEN BUTTON SCREW M3x0.5 X 6mm	2



*THE FRAME IS FOR EXAMPLE ONLY.

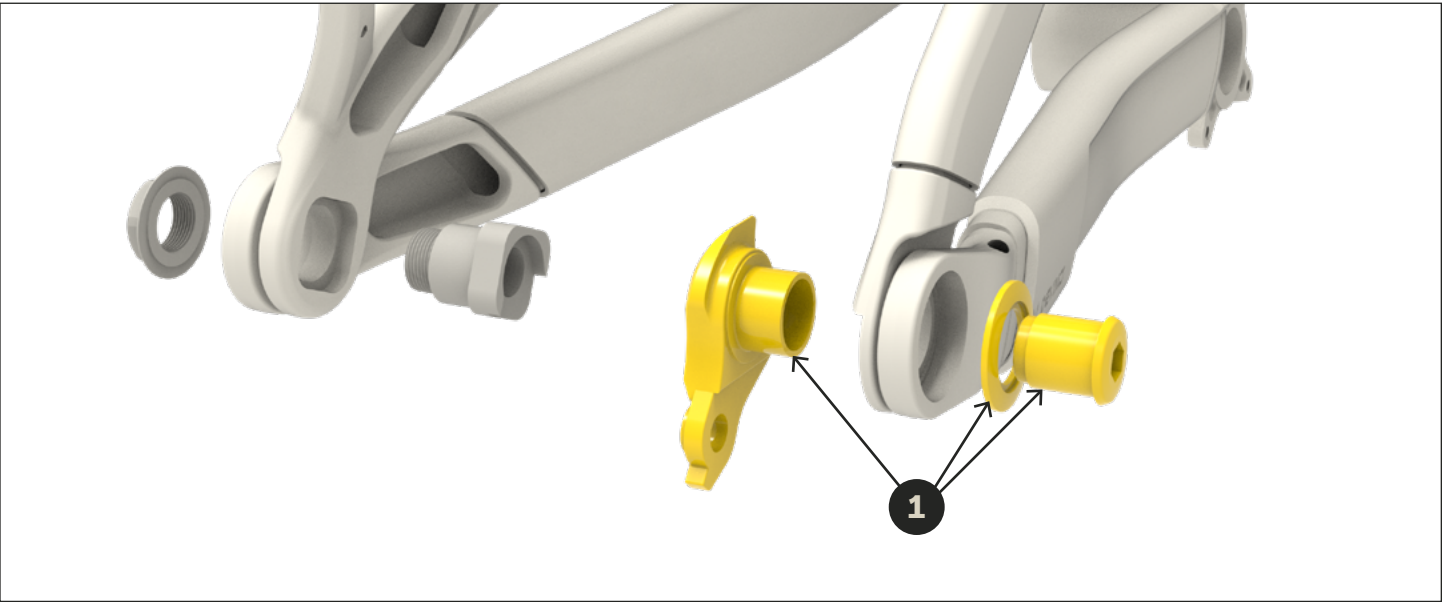
KFC09102
KIT PROTECTORS DT+CS+SS, TROY CARBON

ITEMS	PART #	DESCRIPTION	QTY
1	MACP25003	CS PROTECTOR PCB-091	1
2	MACP25004	DT PROTECTOR PCB-091	1
3	MACP26002	091-SEATSTAY CHAIN PROTECTOR	1



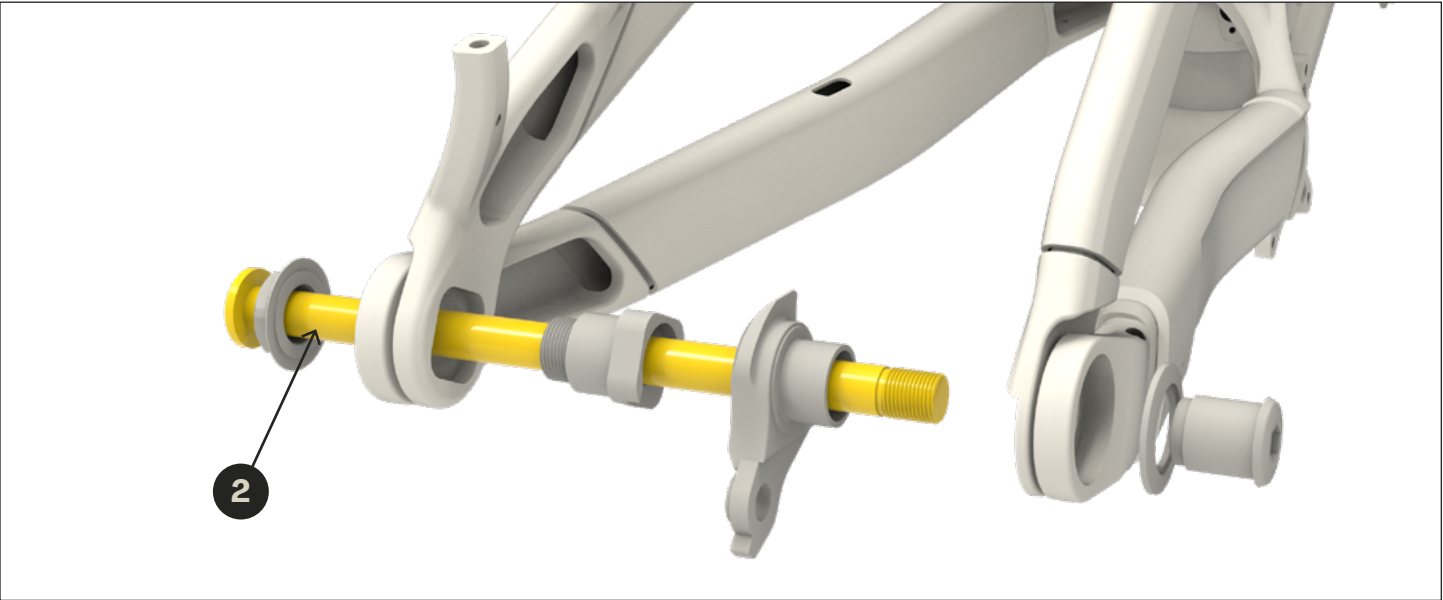
KFC05602
DERAILLEUR HANGER UDH W/29.7 WASHER SPLITPIVOT BIKES

ITEMS	PART #	DESCRIPTION	QTY
1	MFP21001	RD Hanger UDH	1



KFC06503
REAR AXLE BOOST 148*12MM UDH W/O HANDLE, SPLITPIVOT

ITEMS	PART #	DESCRIPTION	QTY
2	MATAR23002	Rear axle for 148mm UDH	1

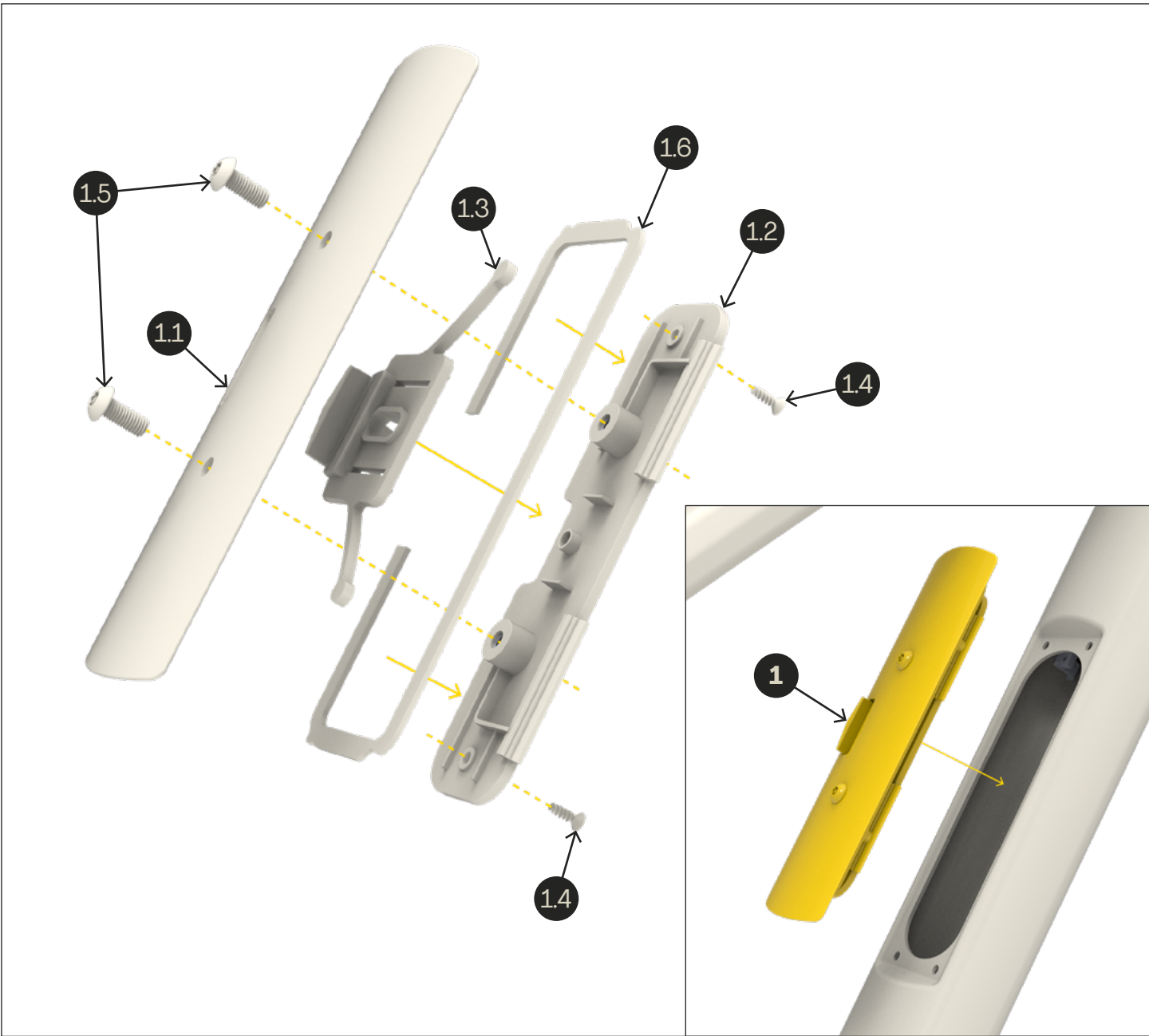


* THE FRAME IS FOR EXAMPLE ONLY.

KFC09006

THE SHED STORAGE ASSEMBLY, TROY ST, TROY

ITEMS	PART #	DESCRIPTION	QTY
1	MPAC24001	PORTE DE RANGEMENT ASSEMBLÉE	1
1.1	MFP24027	SYSTEM DOOR	1
1.2	MFP24028	MECANISM COVER	1
1.3	MFP24029	SYSTEM LOCK	1
1.4	MFV097132	FLAT HEAD THREAD FORMING SCREW FOR PLASTIC, #4 X 3/8"	2
1.5	MFV07003-01	ALLEN BUTTON SCREW M5x0.8 X 12	2
1.6	MFP24030	SYSTEM SEAL	1



KFC09007

TOOL BAG FOR SHED STORAGE, TROY ST, TROY

ITEMS	PART #	DESCRIPTION	QTY
1	MFP24031	Tool bag	1





HEAD OFFICE

1555 Manic
Chicoutimi (Quebec) Canada
G7K 1G8