

TECHNICAL MANUAL
2025+ TROY CARBON



BUILD GX AXS
COLOR INCOGNITO

WE MAKE RIDERS

DEVINCI



ABOUT OUR MANUALS

Like many sports, cycling involves risk of injury and accidents, so you must be fully aware of these risks. Neither the manufacturer, the retailer, nor the person who sold you the bike, nor the people who maintain the trails are responsible for these risks. As you are solely responsible, it is, therefore, essential that you read and fully understand all the parts contained in this manual.

To enjoy maximum safety and enjoyment right from the get go, it is important that you are familiar with your new bike, its handling and its possibilities. It is your duty to maintain your bike well and reduce the risk of injury. Biking can be a dangerous activity, even under the best conditions. These are risks associated with using a bicycle that cannot be predicted or avoided. These are the sole responsibility of the cyclist.

YOUR AUTHORIZED DEVINCI RETAILER

Your authorized Devinci retailer is at your service to guide your choices of bike and accessories which are best suited to the style of biking you wish to perform. This will help you maintain your equipment in good condition so that you can take full advantage of your investment. The staff at your authorized Devinci retailer have the training, experience and tools to carry out the repairs and provide you with reliable advice.

However, your authorized Devinci retailer cannot make decisions for you, and cannot be held responsible for your lack of knowledge, experience, qualification or common sense. However, it will take the necessary time to explain the operation of a component or to help you choose an accessory that meets your specific needs.

For further information, please see the Devinci's User Manual available on www.Devinci.com or ask your authorized Devinci retailer. He will take the time to answer any questions you may have and will advise you with great pleasure.

TABLE OF CONTENTS

TECHNICAL SPECIFICATIONS

4

GEOMETRY

8

CABLE ROUTING

12

SERVICE KITS

22

WARRANTY

32

FORK TRAVEL ALTERATION

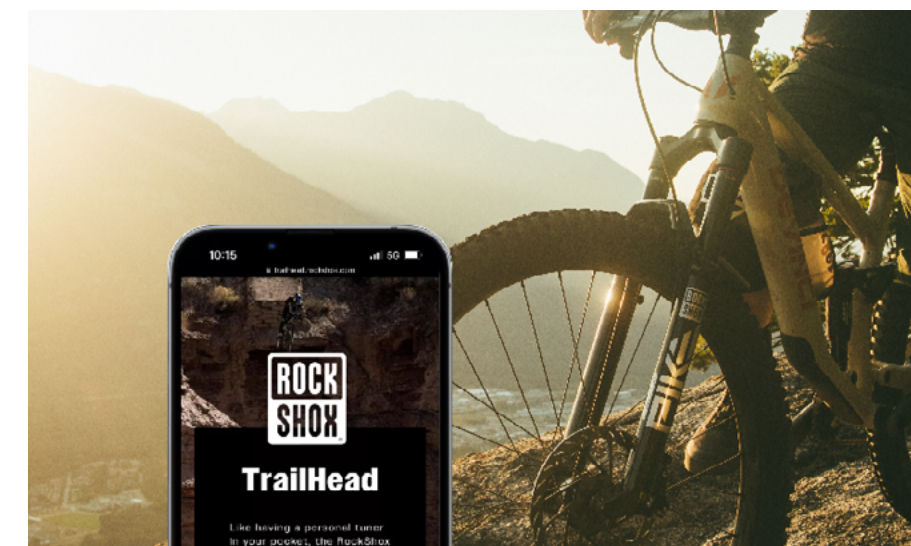


The Devinci Troy carbon is specifically designed and tested for use with a 160 mm travel front suspension fork. Any modifications to the fork travel or style, including but not limited to a 170 mm travel fork, are not recommended and will void the original frame warranty.

The maximum allowable axle-to-crown length for the Devinci Troy carbon is 576 mm. Exceeding this measurement may compromise the bike's performance and safety, potentially leading to catastrophic frame failure and serious personal injury.



TECHNICAL SPECIFICATIONS



SUSPENSION SET UP

Suspension specialist in your pocket! The RockShox TrailHead app is a starting point for dialing in your suspension settings, ensuring a perfect ride experience.

WEB: [START](#)

APPLE STORE: [DOWNLOAD THE APP](#)

GOOGLE STORE: [DOWNLOAD THE APP](#)

TROY CARBON
FRAME

| HEADTUBE DIMENSIONS | | |
|--|----------------------------------|------------------|
| 1. UPPER (S.H.I.S) | ZS44 | 1-1/8" Zerostack |
| 2. LOWER (S.H.I.S) | ZS56 | 1.5" Zerostack |
| BOTTOM BRACKET | | |
| 3. STANDARD | BSA 73mm | |
| 4. ISCG MOUNT | ISCG 05 3 tabs | |
| 5. MINIMUM Q FACTOR | 168 | |
| DRIVETRAIN | | |
| 6. REAR HUB SPACING (OVER LOCKNUT DIMENSION) | TA 12x148 Boost | |
| 7. MAX & MIN CHAINRING | 34T | 28T |
| 8. SMALLEST COG COMPATIBLE | 12s 9T | |
| 9. BIGGEST COG COMPATIBLE | 12s 52T | |
| 10. RECOMMENDED CHAINLINE | 55mm | |
| SEATPOST AND SEATCLAMP | | |
| 11. SEAT TUBE INSIDE DIAMETER (ID) | 31.6 mm | |
| 12. SEAT TUBE OUTSIDE DIAMETER (OD) | 36 mm | |
| 13. DROPPER POST COMPATIBLE | Yes Fully internal | |
| BRAKES | | |
| 14. BRAKE MOUNT (FRAME) | 200 mm direct | |
| 15. MAX ROTOR SIZE AVAILABLE (FRAME)) | 220 mm | |
| ACCESSORIES | | |
| 16. WATER BOTTLE (FRAME) | Yes (16 oz.) | |
| 17. STORAGE SYSTEM | Yes SHED | |
| 18. PROTECTORS | Downtube, chainstay and seatstay | |
| GEOMETRY INPUTS (BASED ON MEDIUM SIZE) | | |
| TROY CARBON FORK 160 MM TRAVEL 150MM | | |
| 19. FRONT SUSPENSION (TRAVEL & SAG) | 160 mm | 25% |
| 20. REAR SUSPENSION (TRAVEL & SAG) | 150 mm | 30% |
| 21. FORK (AXLE-TO-CROWN [A] & OFFSET [B]) | A. 571mm | B. 44mm |
| 23. FRONT AND REAR WHEEL MAX ETRTO | 63-622 | 63-622 |
| 24. REAR SUSPENSION (DIMENSIONS) | 185 x 55 mm | |
| 25. PIGGYBACK SHOCK COMPATIBILITY | Yes | |
| 26. SPRING TYPE COMPATIBILITY | Air & Coil | |
| 28. UPPER SHOCK HARDWARE DIMENSION | Trunnion | |
| 29. LOWER SHOCK HARDWARE DIMENSION | 40 x 10 mm | |

* DISCLAIMER
We are testing many different tires to establish a clearance number that cover a wide spectrum of tires with appropriate frame clearance. However, it is impossible for us to test all tires and rim combination available on the market, so be mindful that some combinations may result in slight rubbing if higher than 68mm in actual width.

SIZES AVAILABLE
S | M | L | XL

13 MAX INSERTION LENGTH
SMALL - 240mm
MEDIUM - 280mm
LARGE - 305mm
X-LARGE - 330mm

1
2
19
23
21A
21B
24
20
18
15
14
12
11
8 9
7
6
3
4

1

2

THE STORAGE DOOR MUST BE PROPERLY ENGAGED TO ENSURE ITS ATTACHMENT AT THE DOWNTUBE LEVEL.

A "CLICK" WILL ACCOMPANY THE CLOSURE WHEN THE DOOR IS SECURELY LOCKED ONTO THE INNER SURFACE OF THE DOWNTUBE.

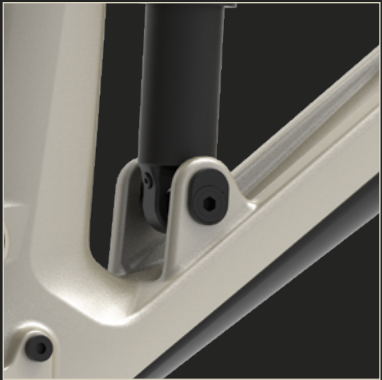
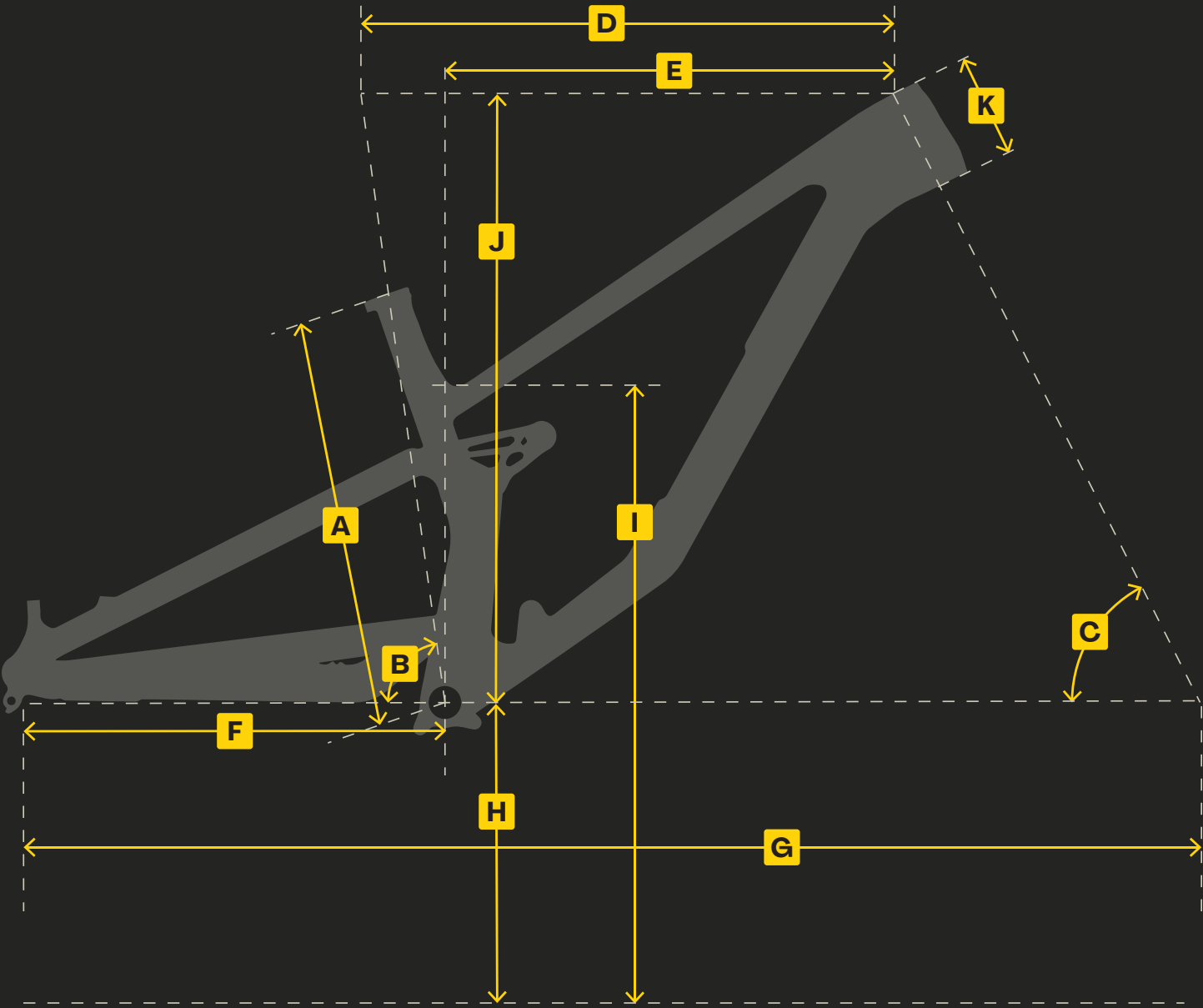
MAKE SURE THE LATCH IS CORRECTLY PRESSED BEFORE EACH RIDE (ACCORDING TO IMAGE 2).

GEOMETRY



GEOMETRY

TROY CARBON



MX


29"

29"

| | SMALL 160 CM - 170 CM | MEDIUM 169 CM - 179 CM | LARGE 178 CM - 188 CM | X-LARGE 187 CM - 198 CM |
|----------------|--------------------------|---------------------------|--------------------------|----------------------------|
| A - ST (MM) | 390 | 420 | 450 | 470 |
| B - SA (DEG) | 78.1 | 77.8 | 76.8 | 76.2 |
| C - HA (DEG) | 64.0 | 64.0 | 64.0 | 64.0 |
| D - TT (MM) | 568 | 594 | 631 | 656 |
| E - REACH (MM) | 440 | 460 | 480 | 500 |
| F - CS (MM) | 432 | 432 | 437 | 442 |
| G - WB (MM) | 1204 | 1228 | 1258 | 1287 |
| H - BBH (MM) | 343 | 343 | 343 | 343 |
| I - SOH (MM) | 708 | 708 | 708 | 708 |
| J - STACK (MM) | 612 | 622 | 631 | 640 |
| K - HT (MM) | 95 | 105 | 115 | 125 |

| | | | | |
|----------------|------|------|------|------|
| A - ST (MM) | 390 | 420 | 450 | 470 |
| B - SA (DEG) | 78.1 | 77.8 | 76.4 | 76.2 |
| C - HA (DEG) | 64.0 | 64.0 | 64.0 | 64.0 |
| D - TT (MM) | 568 | 594 | 631 | 656 |
| E - REACH (MM) | 440 | 460 | 480 | 500 |
| F - CS (MM) | 435 | 435 | 440 | 445 |
| G - WB (MM) | 1206 | 1230 | 1260 | 1289 |
| H - BBH (MM) | 343 | 343 | 343 | 343 |
| I - SOH (MM) | 708 | 708 | 708 | 708 |
| J - STACK (MM) | 612 | 622 | 631 | 640 |
| K - HT (MM) | 95 | 105 | 115 | 125 |

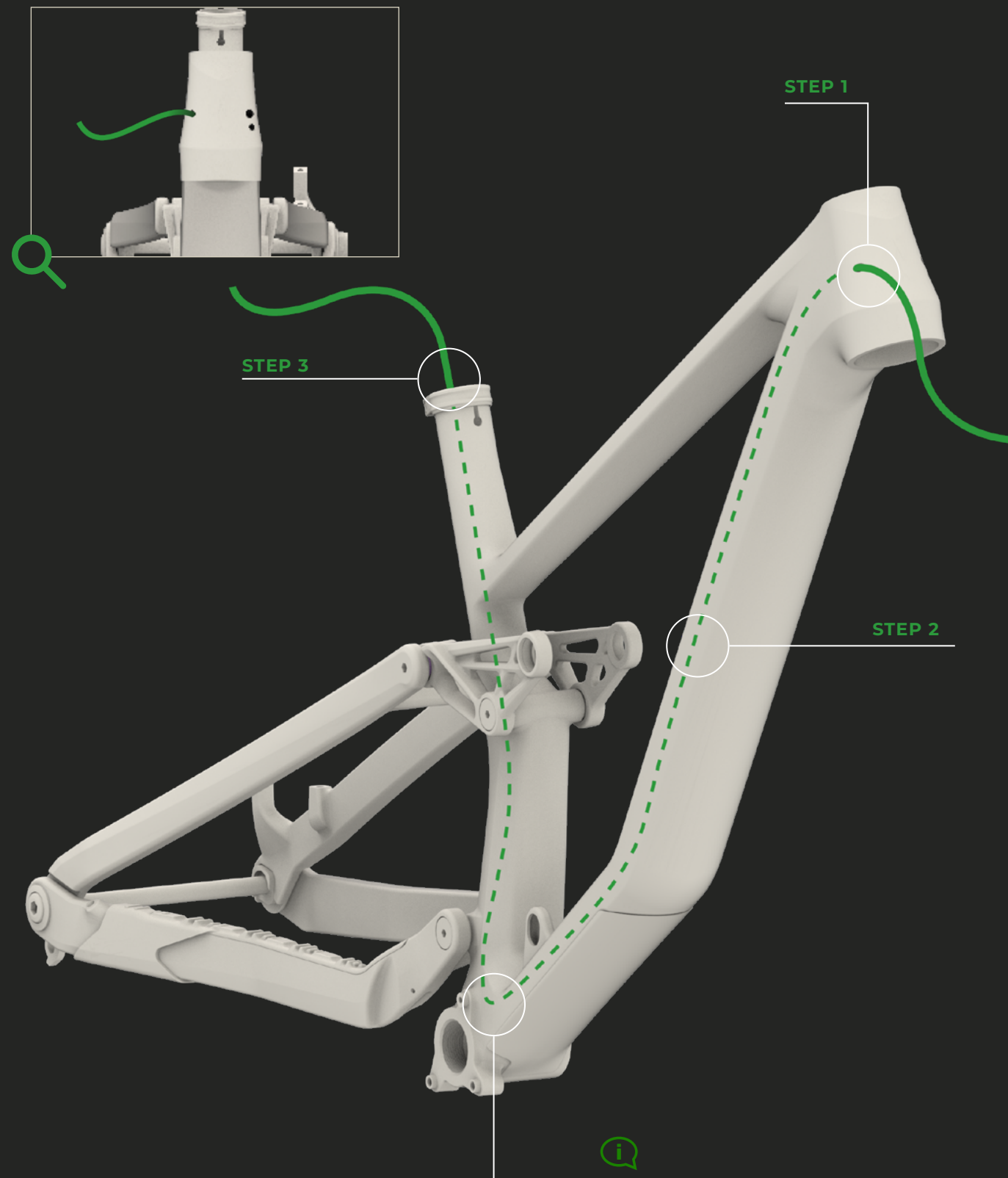
| | | | | |
|----------------|------|------|------|------|
| A - ST (MM) | 390 | 420 | 450 | 470 |
| B - SA (DEG) | 78.9 | 78.6 | 77.6 | 77.0 |
| C - HA (DEG) | 64.7 | 64.7 | 64.7 | 64.7 |
| D - TT (MM) | 567 | 593 | 630 | 655 |
| E - REACH (MM) | 449 | 469 | 488 | 508 |
| F - CS (MM) | 432 | 432 | 437 | 442 |
| G - WB (MM) | 1204 | 1228 | 1258 | 1287 |
| H - BBH (MM) | 354 | 354 | 354 | 354 |
| I - SOH (MM) | 718 | 718 | 718 | 718 |
| J - STACK (MM) | 606 | 615 | 624 | 633 |
| K - HT (MM) | 95 | 105 | 115 | 125 |



CABLE ROUTING

SEAT POST HOUSING

TROY CARBON



LEGEND

- Seat post housing outside the frame
- - - Seat post housing inside the frame

STEP 1

Insert the seatpost housing into the upper right internal conduit located in the diagonal tube.

STEP 2

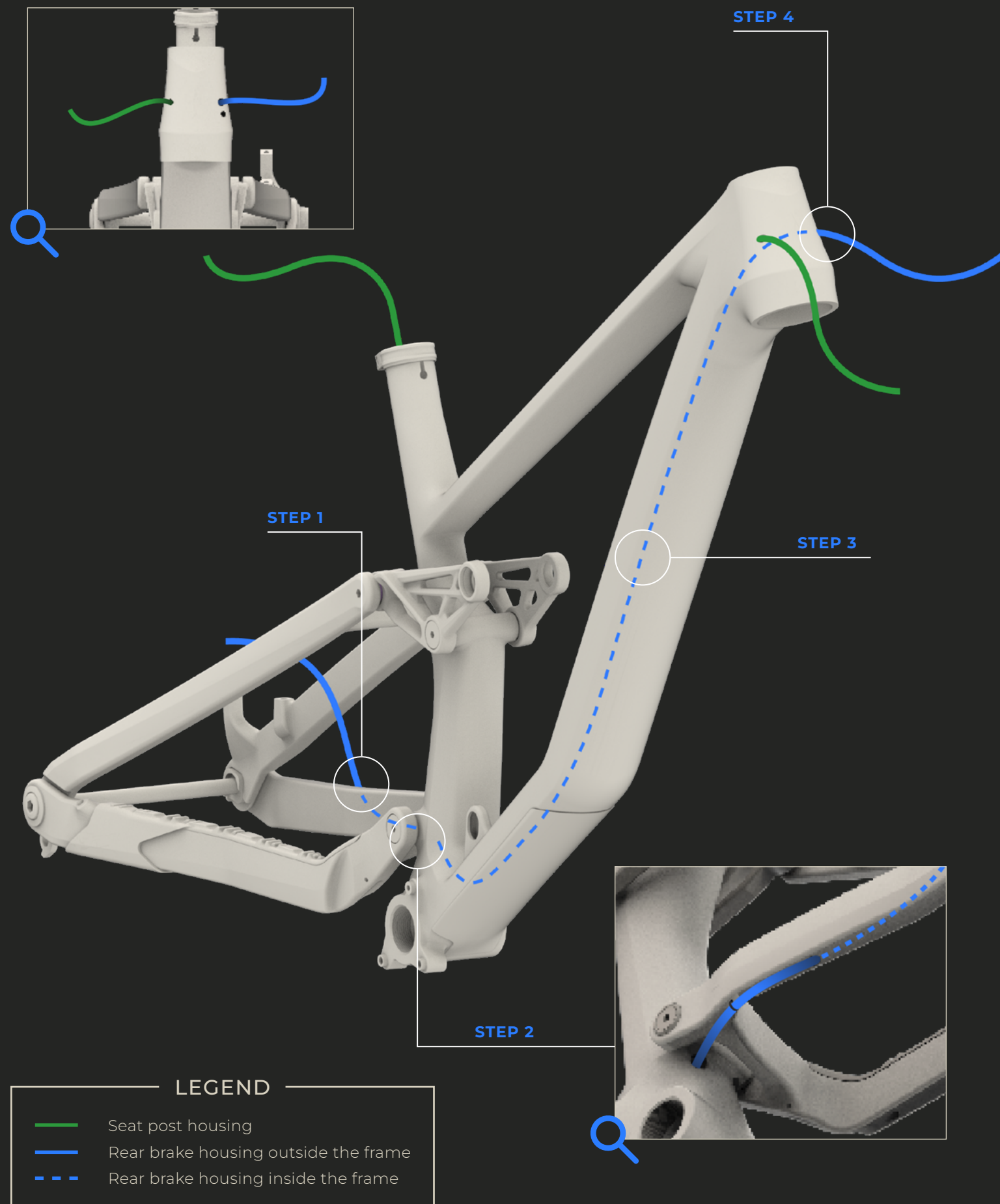
Gently slide the housing through the internal conduit.

STEP 3

Pull the housing out of the frame through the seat tube.



If you encounter difficulty inserting the housing into the internal conduit for the seatpost, thread a cable through the housing to help guide it, applying light tension to the cable until it exits through the seat tube.



REAR BRAKE HOUSING

TROY CARBON

STEP 1

Insert the rear brake housing into the upper left cavity located on top of the chainstay.

STEP 2

Pull the brake housing out from under the chainstay on the left. Insert the housing into the internal conduit located at the rear left of the seatpost tube.

STEP 3

Gently slide the housing through the internal conduit.

STEP 4

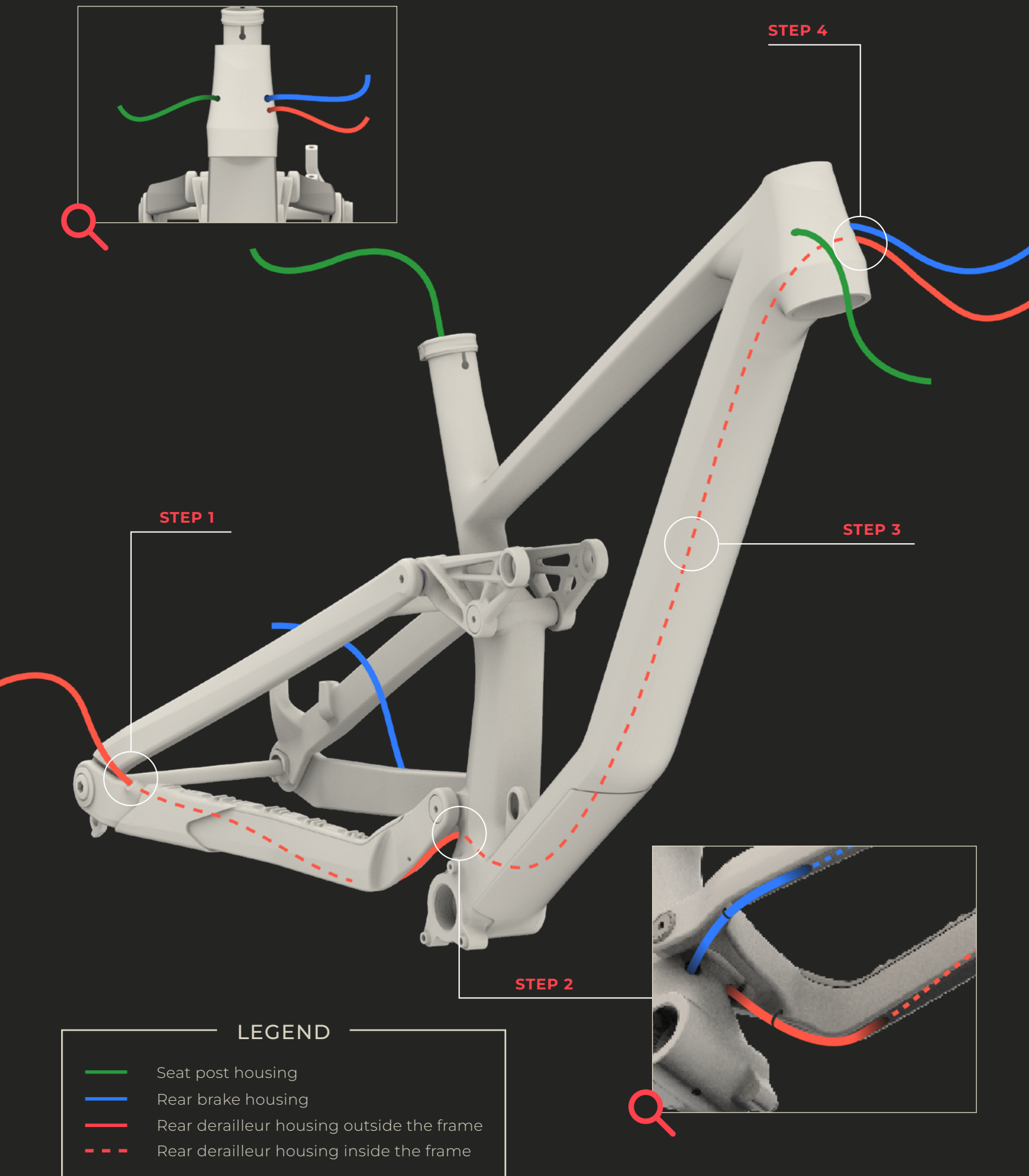
Pull the brake housing out of the upper left cavity of the diagonal tube.



Make sure the housing is inside the chainsaty before connecting the housing to the brake.

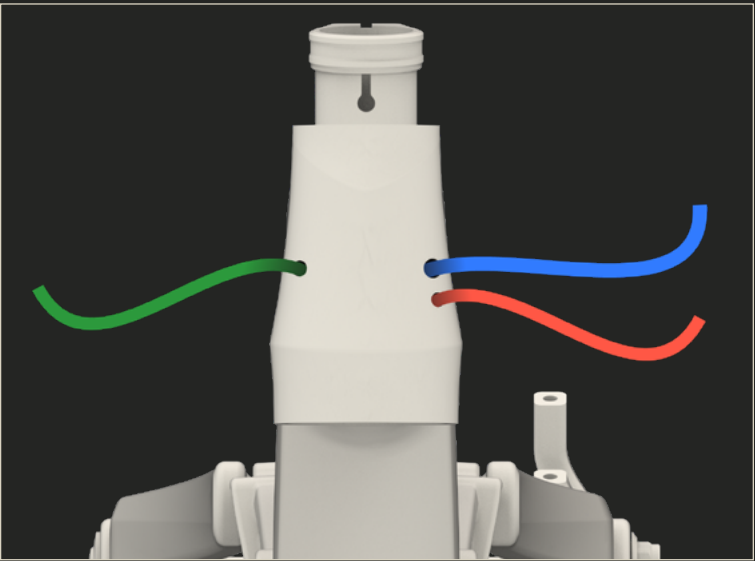
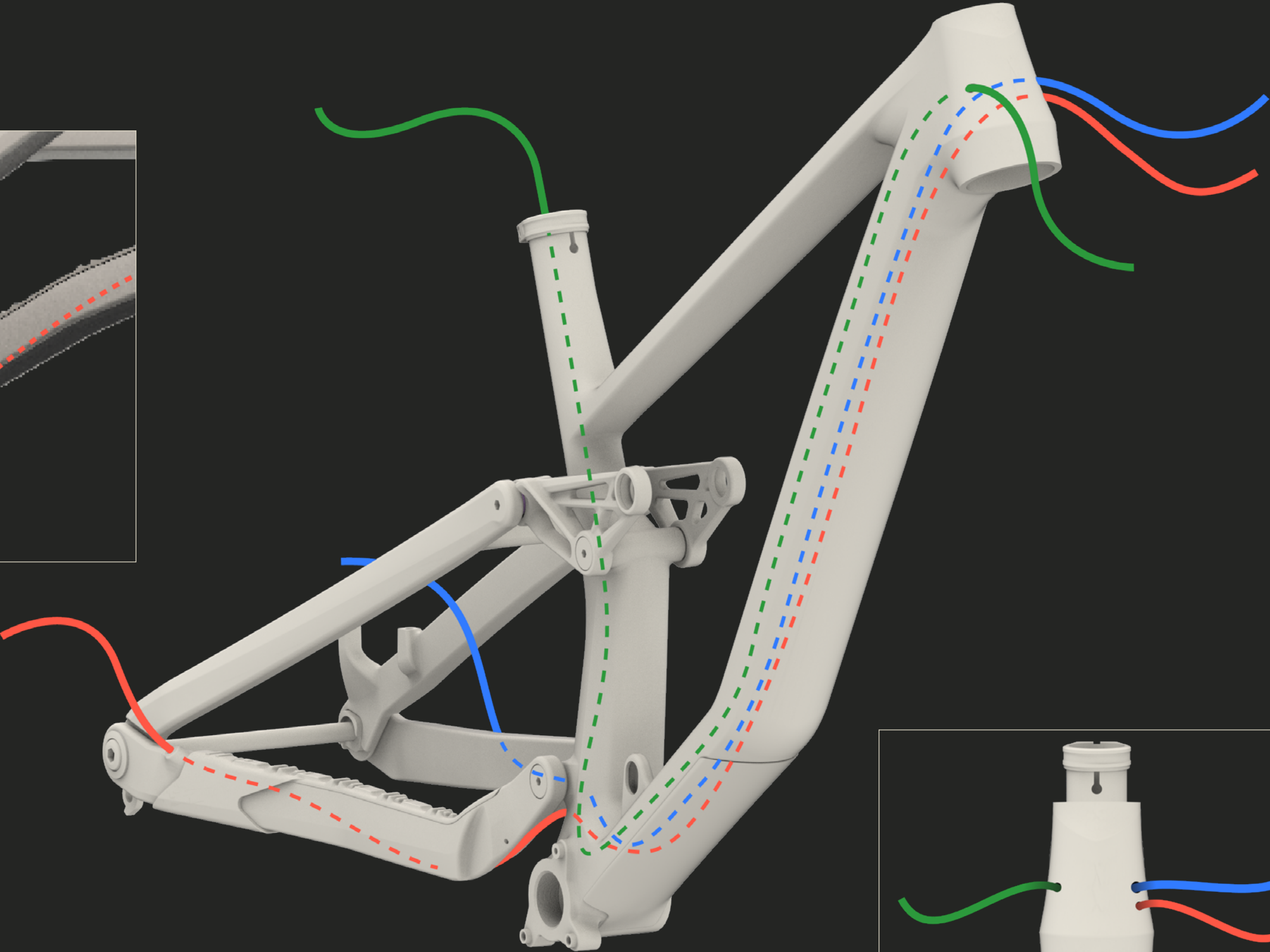
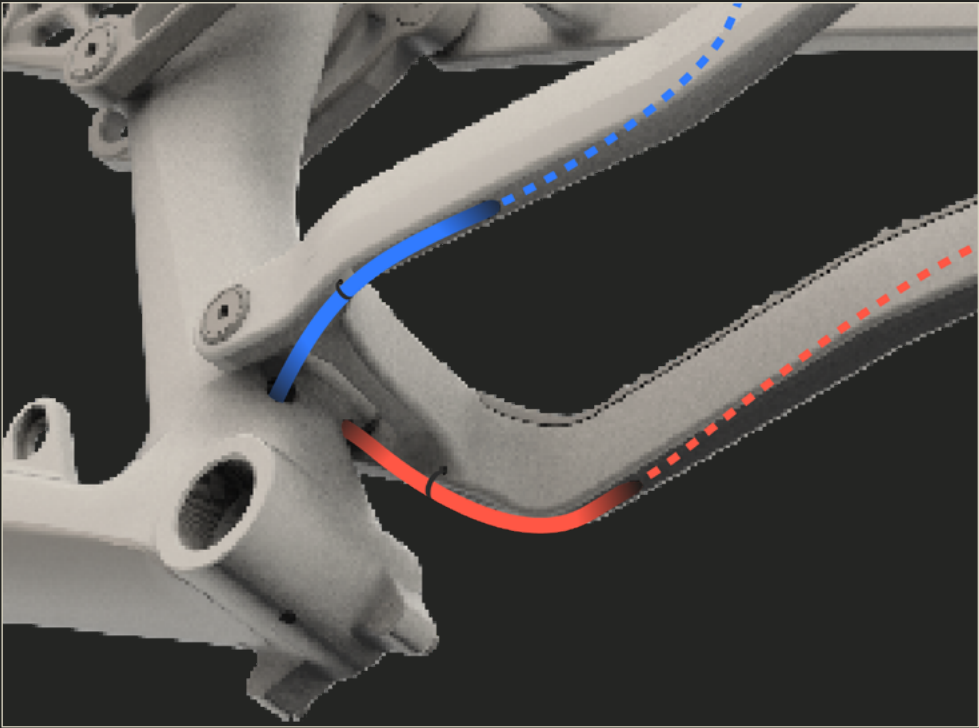
REAR DERAILLEUR HOUSING

TROY CARBON



OVERVIEW

TROY CARBON



LEGEND

- Seatpost housing
- Rear brake housing
- Rear derailleur housing
- Housing outside the frame
- - - Housing inside the frame

SERVICE KITS



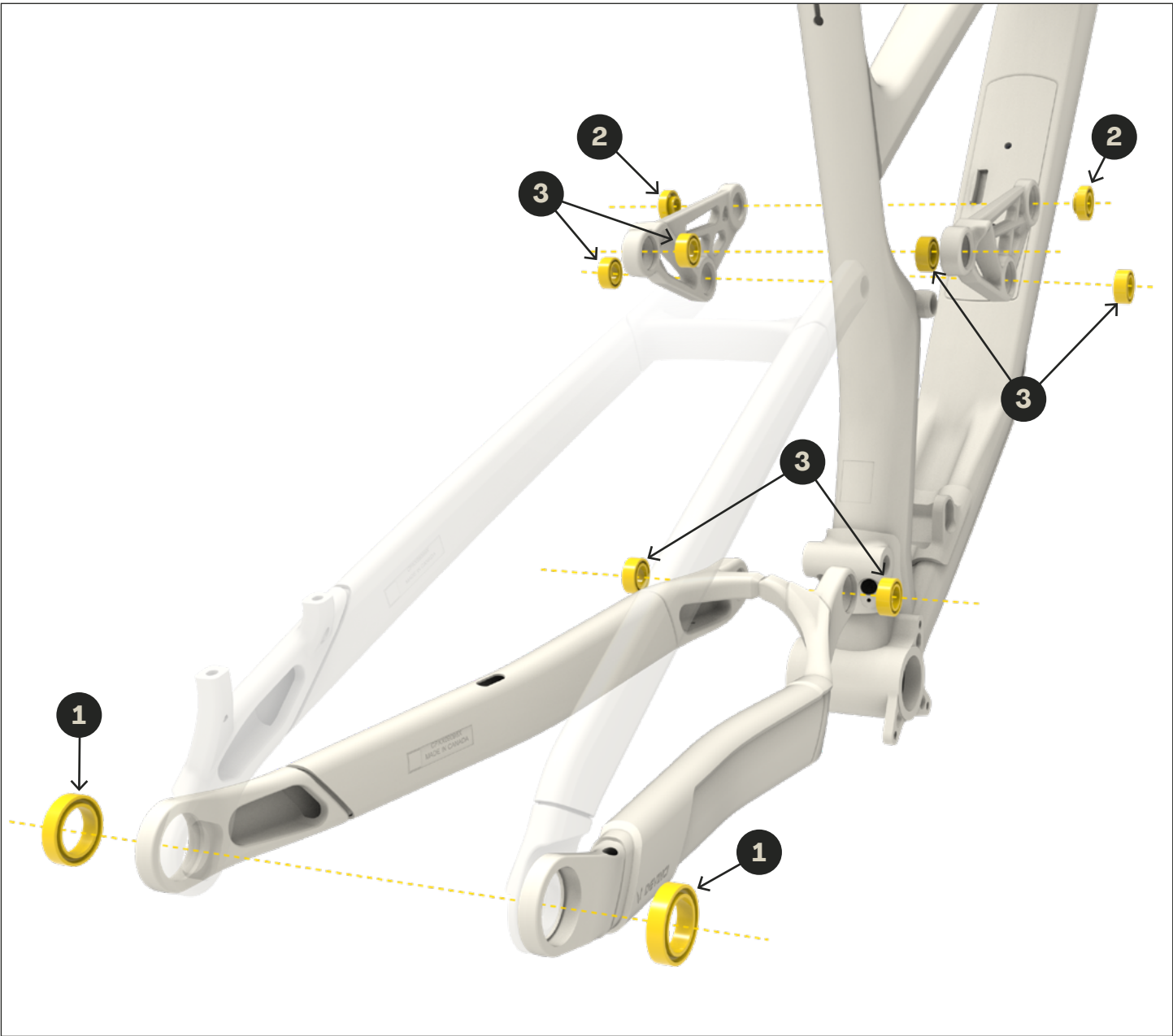
SERVICE KITS

TROY CARBON

KFC08902

BEARING KIT E-TROY LITE, TROY ST, TROY

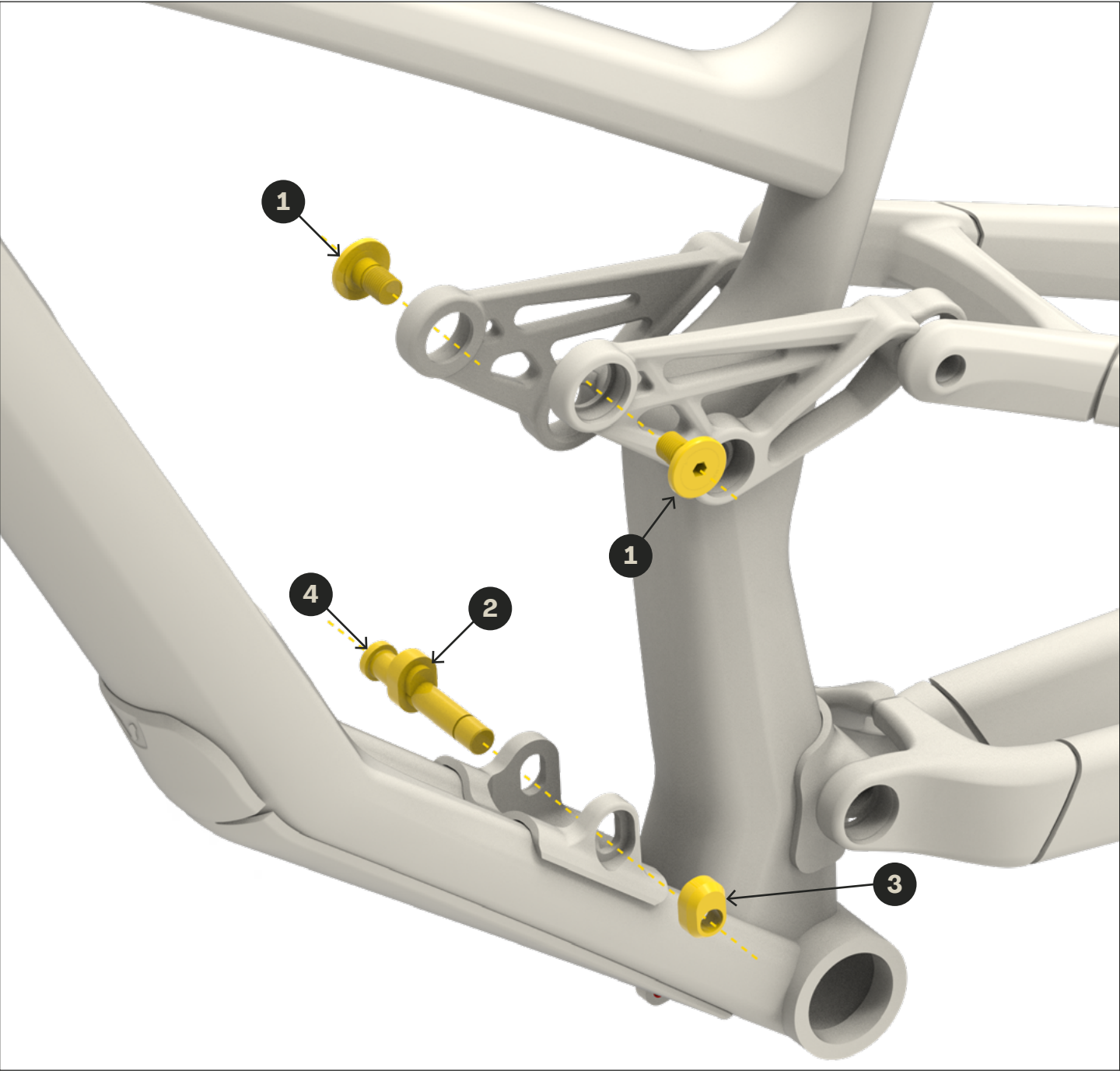
| ITEMS | PART # | DESCRIPTION | QTY |
|-------|----------|--|-----|
| 1 | MFP21016 | BALL BEARING MR20307 20x30x7; STD TYPE, DOUBLE LIP | 2 |
| 2 | MFP24014 | BEARING 6900 WITH EXTENDED INNER CAGE | 2 |
| 3 | MFP19001 | BALL BEARING 3801 LLU MAX 12x21x8 | 6 |



*THE FRAME IS FOR EXAMPLE ONLY.

KFC09001
SHOCK BOLT KIT TROY ST, TROY

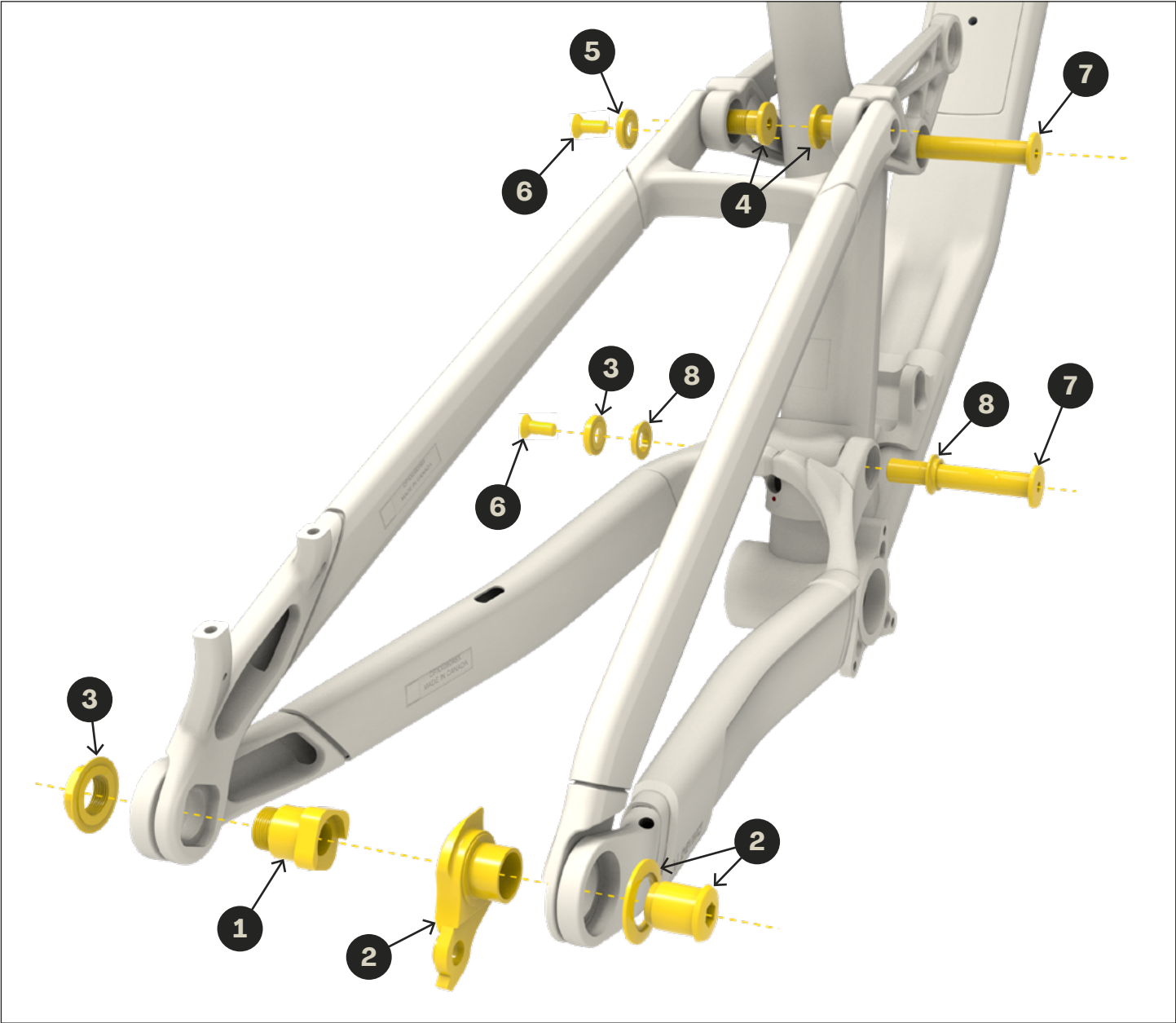
| ITEMS | PART # | DESCRIPTION | QTY |
|-------|----------|---------------------------------|-----|
| 1 | MFV24009 | SOCKET CAP SCREW M10x1.0 X 16mm | 2 |
| 2 | MFP25008 | ADJUSTER 5.5mm FOR 10mm SCREW | 1 |
| 3 | MFP25009 | ADJUSTER 5.5mm M10x1.0 | 1 |
| 4 | MFV25001 | SOCKET CAP SCREW M10x1.0 X 59 | 1 |



* THE FRAME IS FOR EXAMPLE ONLY.

KFC09002
PIVOT KIT TROY ST, TROY

| ITEMS | PART # | DESCRIPTION | QTY |
|-------|----------|---------------------------------|-----|
| 1 | MFP24008 | DROPOUT PIVOT LEFT SHAFT 20mm | 1 |
| 2 | MFD21001 | HANGER UDH | 1 |
| 3 | MFP24009 | PIVOT NUT FOR MR 20307 BEARING | 1 |
| 4 | MFV24016 | SOCKET CAP SCREW M12x1.0 X 21mm | 2 |
| 5 | MFV24008 | PIVOT WASHER | 2 |
| 6 | MFV24012 | SOCKET FLAT SCREW M8x1.25 X 20m | 2 |
| 7 | MFP24010 | SHAFT 12x73 | 2 |
| 8 | MFP24012 | PIVOT SPACER 12x16x4 | 2 |

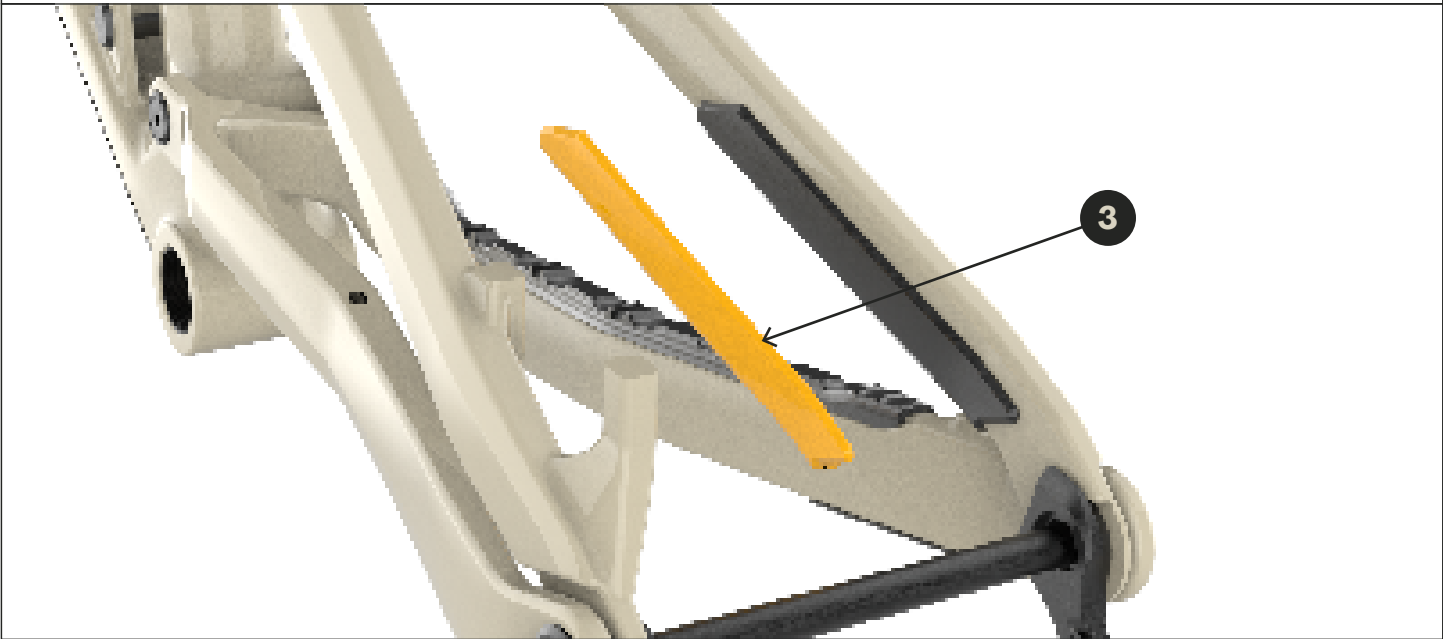


*THE FRAME IS FOR EXAMPLE ONLY.



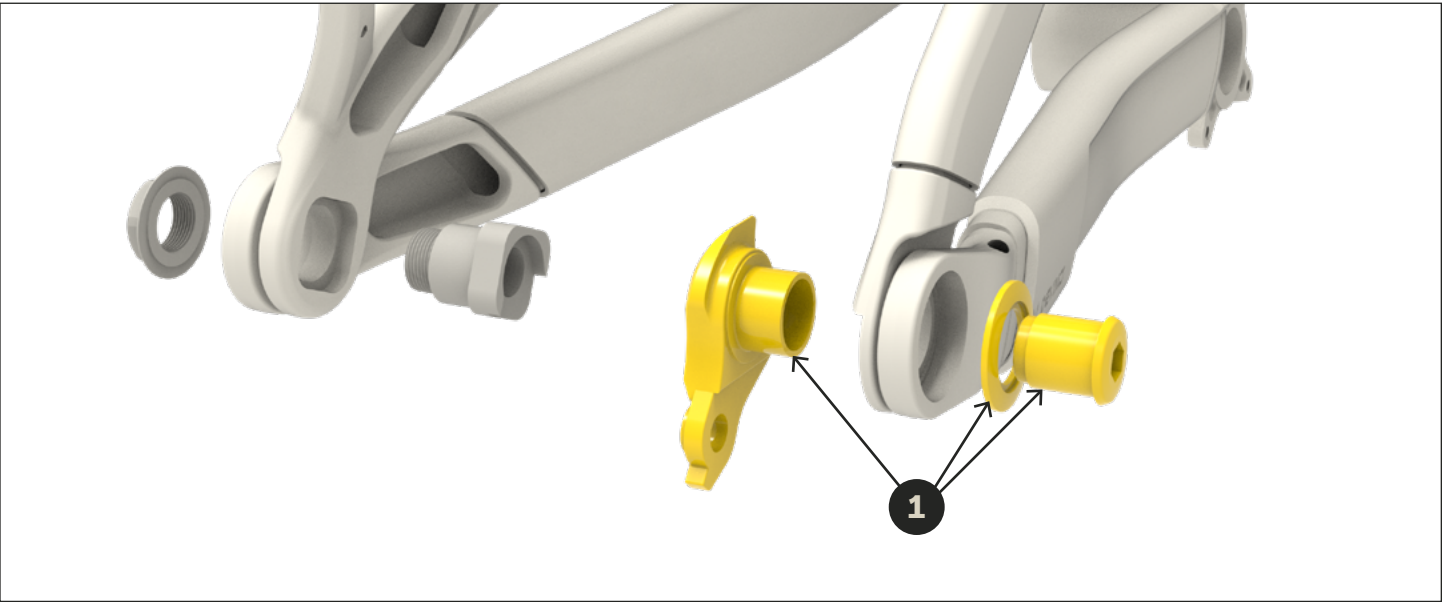
KFC09102
KIT PROTECTORS DT+CS+SS, TROY CARBON

| ITEMS | PART # | DESCRIPTION | QTY |
|-------|-----------|------------------------------|-----|
| 1 | MACP25003 | CS PROTECTOR PCB-091 | 1 |
| 2 | MACP25004 | DT PROTECTOR PCB-091 | 1 |
| 3 | MACP26002 | 091-SEATSTAY CHAIN PROTECTOR | 1 |



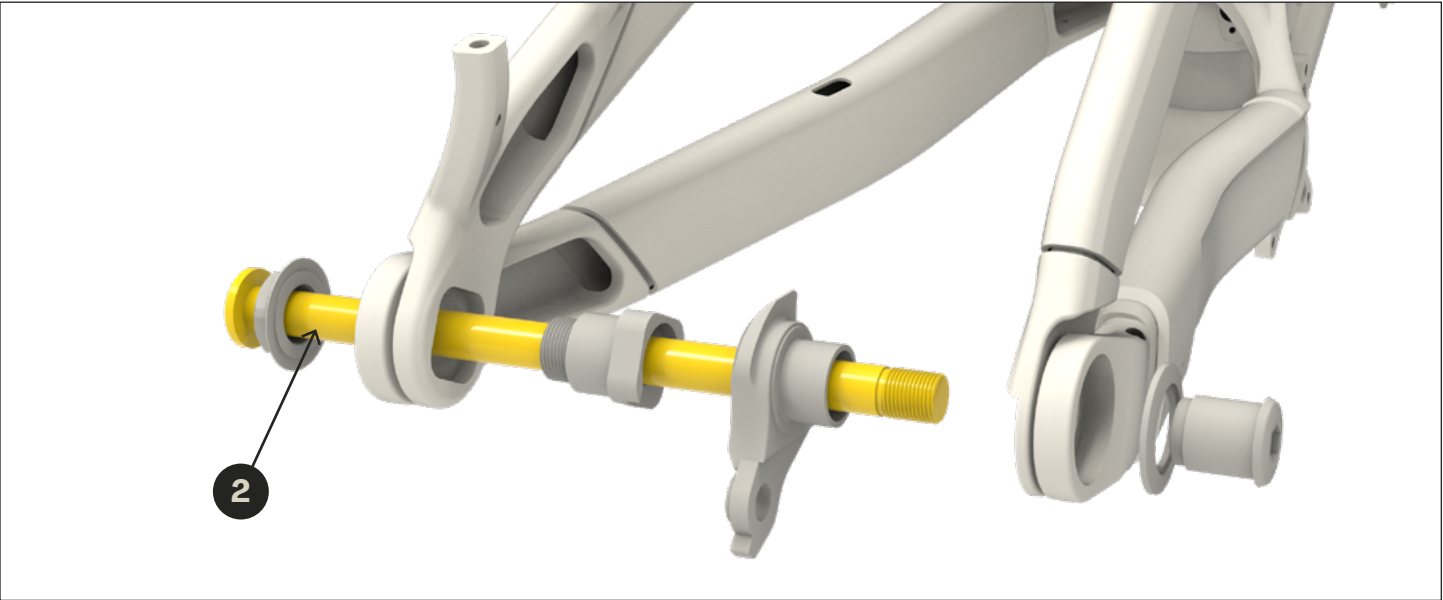
KFC05602
DERAILLEUR HANGER UDH W/29.7 WASHER SPLITPIVOT BIKES

| ITEMS | PART # | DESCRIPTION | QTY |
|-------|----------|---------------|-----|
| 1 | MFP21001 | RD Hanger UDH | 1 |



KFC06503
REAR AXLE BOOST 148*12MM UDH W/O HANDLE, SPLITPIVOT

| ITEMS | PART # | DESCRIPTION | QTY |
|-------|------------|-------------------------|-----|
| 2 | MATAR23002 | Rear axle for 148mm UDH | 1 |

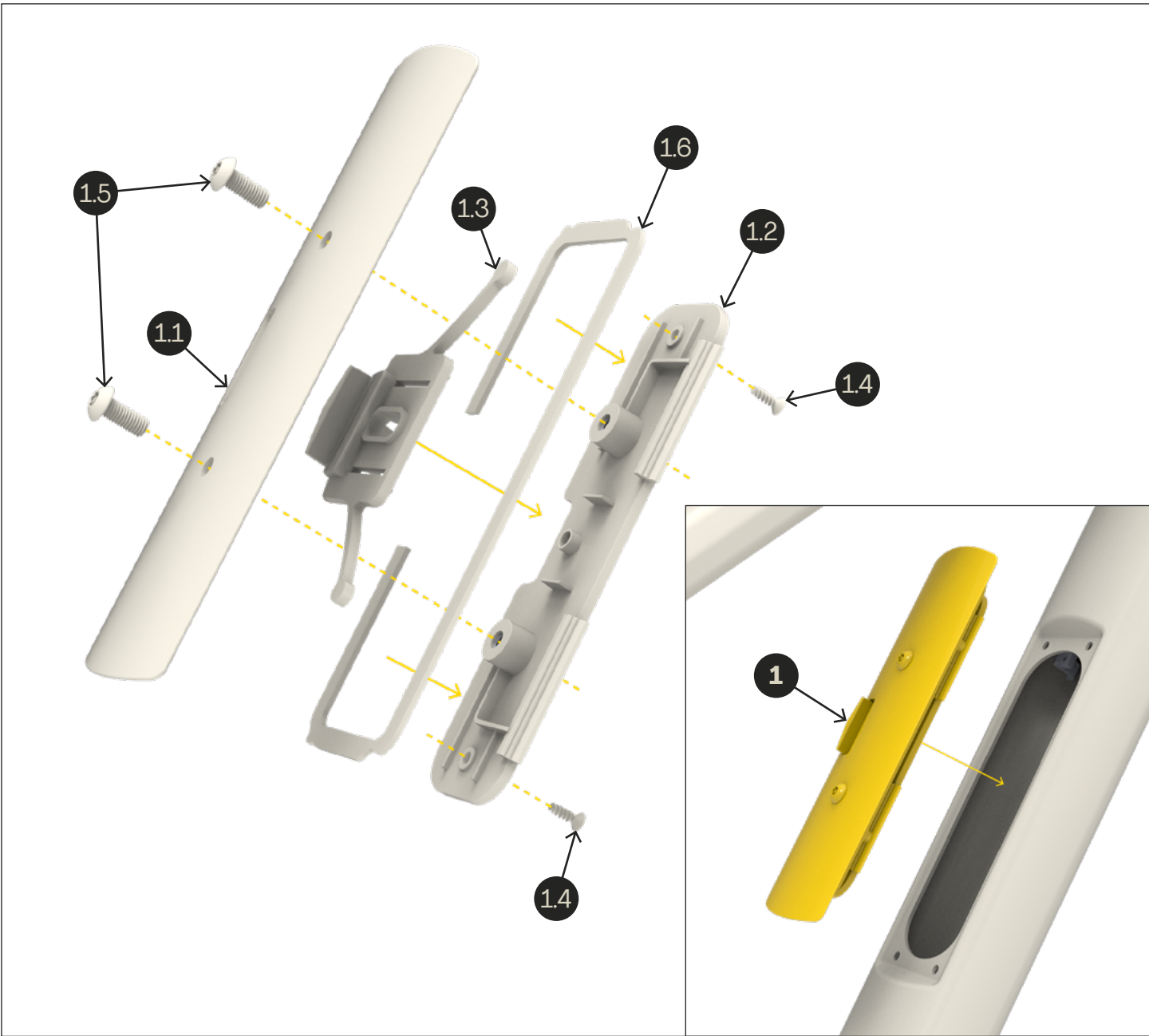


* THE FRAME IS FOR EXAMPLE ONLY.

KFC09006

THE SHED STORAGE ASSEMBLY, TROY ST, TROY

| ITEMS | PART # | DESCRIPTION | QTY |
|-------|-------------|---|-----|
| 1 | MPAC24001 | PORTE DE RANGEMENT ASSEMBLÉE | 1 |
| 1.1 | MFP24027 | SYSTEM DOOR | 1 |
| 1.2 | MFP24028 | MECANISM COVER | 1 |
| 1.3 | MFP24029 | SYSTEM LOCK | 1 |
| 1.4 | MFV097132 | FLAT HEAD THREAD FORMING SCREW FOR PLASTIC, #4 X 3/8" | 2 |
| 1.5 | MFV07003-01 | ALLEN BUTTON SCREW M5x0.8 X 12 | 2 |
| 1.6 | MFP24030 | SYSTEM SEAL | 1 |



KFC09007

TOOL BAG FOR SHED STORAGE, TROY ST, TROY

| ITEMS | PART # | DESCRIPTION | QTY |
|-------|----------|-------------|-----|
| 1 | MFP24031 | Tool bag | 1 |



A full-page background image featuring a mountain biker in a blue long-sleeved shirt and black shorts, wearing a helmet, sitting on a black mountain bike. The biker is positioned on a mossy, rocky ridge. In the background, a large, rugged mountain peak is visible under a cloudy sky. Pine branches are visible in the foreground on the right side.

WARRANTY

DEVINCI WARRANTY



At Devinci, durability, performance, and peace of mind are at the core of everything we build. That’s why our warranty is designed to protect your investment and support you long after your purchase.

WHAT’S COVERED

FOR THE ORIGINAL OWNER

- **Aluminum frames:** Lifetime warranty* for the bicycle’s useful life
- **Carbon fiber frames:** Lifetime warranty* for the bicycle’s useful life
- **Paint and decals:** 1-year warranty
- **Suspension pivots (bearings, bolts, axles):** 1-year warranty

*Proof of purchase is required for all warranty claims.

COMPONENTS

All components on Devinci bikes are covered by their respective manufacturer warranties. For questions, your authorized Devinci retailer is your go-to resource. <https://www.devinci.com/en/find-a-dealer/>

OUTSIDE THE WARRANTY? WE’VE GOT YOUR BACK.

CUSTOMER ASSISTANCE PROGRAM

Accidents happen. That’s why we created the [Devinci Customer Assistance Program](#).

If your situation isn’t covered under warranty—whether it’s a crash, damage, or just bad luck—we’ll help you get back on the road or trail with a **discount on replacement parts**, based on their original retail price. This program is offered **for life**, at our discretion, and is available through our customer service team or any authorized Devinci retailer.

WHAT’S NOT COVERED

Our warranty does not apply in the following cases:

- Bike not purchased from an authorized Devinci retailer
- Improper assembly or service not performed by an authorized retailer
- Accidents, misuse, or excessive/abusive riding
- Damage from high-intensity use (racing, bike parks, improper transport, etc.)
- Structural or cosmetic modifications to the frame
- Normal wear and tear or material fatigue over time
- Costs of replacing parts that are worn out or obsolete at the time of the claim

For any questions, please contact our customer service team or your nearest Devinci retailer.

DEVINCI WARRANTY POLICY

All Devinci frames are covered by a manufacturer’s warranty against defects in materials and workmanship for a specified period, as detailed below, starting from the date of purchase. Any parts replaced or repaired under this warranty are covered for the remaining duration of the original warranty period.

The bicycle owner must provide proof of purchase to make a warranty claim.

Replacement parts are subject to availability within Devinci’s inventory at the time of the claim. In some cases, the color, features, and/or model may differ from the original part.

At Devinci’s discretion, certain costs may apply when processing a warranty replacement or repair, including:

- Shipping fees
- Additional labor costs associated with the installation or repair of a part
- Costs of replacing parts that are worn out or obsolete at the time of the claim

WARRANTY DURATION

For the original purchaser:

- Aluminum frames are covered for the lifetime of the bicycle’s useful life.
- Carbon fiber frames are covered for the lifetime of the bicycle’s useful life.
- Paint and decals are covered for one (1) year from the original date of purchase.
- Suspension frame pivots (including bearings, bolts, and axles) are covered for one (1) year from the original date of purchase.
- The components assembled on Devinci bicycles are exclusively covered by the warranties provided by their respective manufacturers, with Devinci assuming no responsibility. Please contact your authorized Devinci dealer for more details on applicable warranties.

CUSTOMER ASSISTANCE PROGRAM

For those unexpected moments when your situation is not covered under our warranty policy, Devinci’s Customer Assistance Program is here to help. Whether it’s a crash, accidental damage, or simple bad luck, this program is designed to get you back on the road or trails as quickly as possible by offering a discount on replacement parts based on their original retail price.

This program is separate from Devinci’s manufacturer warranty and is managed at Devinci’s sole discretion. It is accessible through our customer service department or any authorized Devinci retailer.

WARRANTY EXCLUSIONS

At Devinci’s discretion, the warranty may be void under the following circumstances:

- The bicycle was not purchased from an authorized Devinci retailer.
- The bicycle was not fully assembled by an authorized Devinci retailer.
- Repairs were not performed by an authorized Devinci retailer.
- The instructions in the user manual and/or technical manual were not followed.
- Recommended periodic inspections and maintenance outlined in the user manual and/or technical manual were not performed.
- Non-compatible parts were installed. Compatible parts include original components or those specified as compatible in the user manual and/or technical manual.
- Paint damage caused by the application or removal of an adhesive frame protector.

DEVINCI WARRANTY

- Damage resulted from accidental or unforeseen events, such as:
 - Accidents, impacts, or falls
 - Misuse, abnormal or excessive use, or negligence
 - Intensive use beyond the scope of normal recreational cycling
 - Improper or repeated use of ski lifts, vehicle racks, or other transportation methods
 - Use in competition or in environments/activities beyond the intended design of the bicycle
- Additional damage caused by continued use of the bicycle after an initial defect, if a warranty claim was not filed or was denied.
- The frame and/or components were altered (e.g., polishing, structural or mechanical modifications, stripping, sanding, shot peening, etc.).
- The frame size or model is inappropriate for the rider.
- Damage caused by normal wear and tear, including material fatigue over time.

LIMITATION OF LIABILITY

This warranty represents the complete and final warranty coverage for Devinci frames. Devinci does not authorize any individual, including authorized dealers, to offer any additional warranty beyond what is explicitly stated herein. Any other obligations, representations, or illustrations made by any party are not binding on Devinci and are excluded from this warranty.

Subject to applicable laws in Quebec and Canada, Devinci assumes no liability for material, bodily, or moral damages suffered by the user, purchaser, or any other party due to the use of a Devinci frame or component, except in cases of negligence or intentional misconduct by Devinci, as determined by a competent court.

Unless otherwise prohibited by applicable law, Devinci disclaims all other warranties, express or implied, including but not limited to implied warranties of merchantability or fitness for a particular purpose. Devinci's liability will not exceed the actual purchase price of the bicycle, nor will it cover any special, incidental, or consequential damages related to the bicycle.

By claiming warranty rights, the purchaser agrees that any legal proceedings shall be conducted in the judicial district of Chicoutimi, Province of Quebec, Canada.



1987



WE MAKE RIDERS

HEAD OFFICE

1355 Manic
Chicoutimi (Quebec) Canada
G7K 1G8

www.devinci.com