

WE MAKE RIDERS

CHICOUTIMI, QUÉBEC



TECHNICAL MANUAL

CHAINSAW 2023+

DEVINCI



ABOUT OUR MANUALS

Like many sports, cycling involves risk of injury and accidents, so you must be fully aware of these risks. Neither the manufacturer, the retailer, nor the person who sold you the bike, nor the people who maintain the trails are responsible for these risks. As you are solely responsible, it is, therefore, essential that you read and fully understand all the parts contained in this manual.

To enjoy maximum safety and enjoyment right from the get go, it is important that you are familiar with your new bike, its handling and its possibilities. It is your duty to maintain your bike well and reduce the risk of injury. Biking can be a dangerous activity, even under the best conditions. These are risks associated with using a bicycle that cannot be predicted or avoided. These are the sole responsibility of the cyclist.

YOUR AUTHORIZED DEVINCI RETAILER

Your authorized Devinci retailer is at your service to guide your choices of bike and accessories which are best suited to the style of biking you wish to perform. This will help you maintain your equipment in good condition so that you can take full advantage of your investment. The staff at your authorized Devinci retailer have the training, experience and tools to carry out the repairs and provide you with reliable advice.

However, your authorized Devinci retailer cannot make decisions for you, and cannot be held responsible for your lack of knowledge, experience, qualification or common sense. However, it will take the necessary time to explain the operation of a component or to help you choose an accessory that meets your specific needs.

For further information, please see the Devinci's User Manual available on www.Devinci.com or ask your authorized Devinci retailer. He will take the time to answer any questions you may have and will advise you with great pleasure.



TABLE OF CONTENTS

Frame: Technical Specifications

6

Cable Routing

8

Service Kits

10

Assembly Tips

12

Warranty

16



DH FORK TRAVEL ALTERATION

The Devinci Troy Gen-5 is specifically designed and tested for use with a 180 mm travel front suspension fork. Any modifications to the fork travel or style, including but not limited to a 180 mm travel fork, are not recommended and will void the original frame warranty.

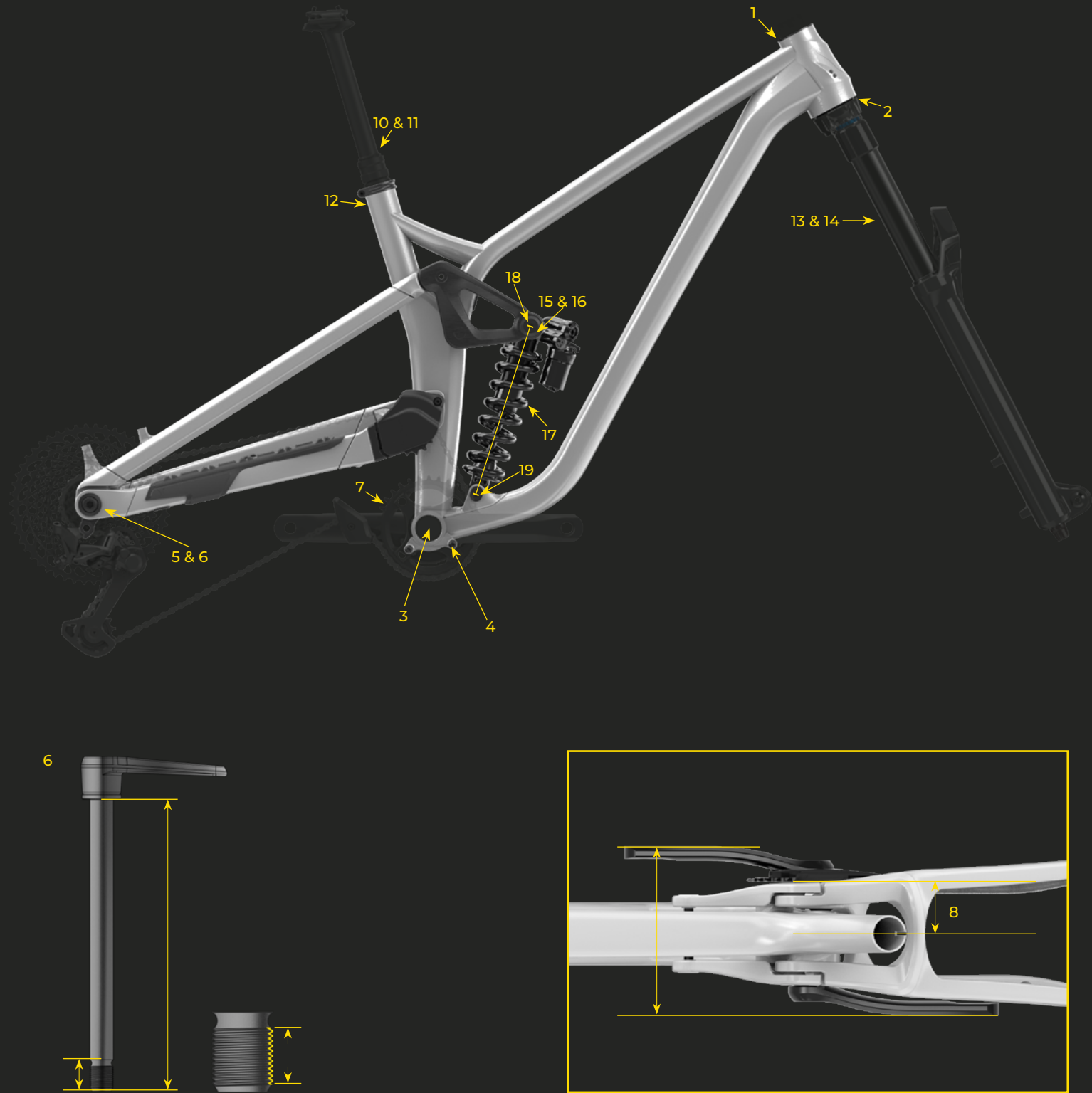
The maximum allowable axle-to-crown length for the Devinci Chainsaw is 595 mm. Exceeding this measurement may compromise the bike's performance and safety, potentially leading to catastrophic frame failure and serious personal injury.



HEAD TUBE DIMENSIONS		
1. UPPER (S.H.I.S)	ZS44	1-1/8" Zerostack
2. LOWER (S.H.I.S)	ZS56	1.5" Zerostack
CRANKSET		
3. STANDARD	73mm BSA	
4. ISCG MOUNT	ISCG 05, fixed	
MECHANICAL TRANSMISSION (1X)		
5. REAR HUB SPACING O.L.D (Over Locknut Dimension)	TA 12 x 157	
6. AXLE STOCK IMPORTANT INFOS	A. LENGHT: 197 B. THREAD: 1.0MM C. PITCH : M12xP1	
7. MAXIMUM & MINIMUM CHAINING	38T	28T
8. RECOMMENDED CHAINLINE	56.5mm	
9. MINIMUM Q-FACTOR	173mm	
SEATPOST AND SEATCLAMP		
10. SEATPOST INSIDE DIAMETER (ID)	34.9mm	
11. SEATPOST LENGTH (P,M,G, TG)	225mm, 250mm 285mm & 300mm	
12. SEAT TUBE OUTSIDE DIAMETER (OD)	39.3mm	
COMPATIBILITY INFO (BASED ON MEDIUM SIZE)		
29er ENDURO FORK 170MM TRAVEL 170MM		
13. FRONT SUSPENSION (TRAVEL & SAG)	170mm	25%
14. FORK AXLE-TO-CROWN & OFFSET	581mm	51%
15. REAR SUSPENSION (TRAVEL & SAG)	170mm	25%
16. SHOCK LENGTH & STROKE	225mm	
17. SPRING TYPE COMPATIBILITY	AIR & COIL	
18. UPPER (OR FRONT) SHOCK HARDWARE DIMENSION	65 mm (Trunnion)	
19. LOWER (OR REAR) SHOCK HARDWARE DIMENSION	40 X 10mm	
20. FRONT & REAR WHEEL GEOMETRY	748	748
21. REAR WHEEL MAX DIMENSIONS	29x2.5*	
22. BRAKE MOUNT	Post mount 200mm direct	
COMPATIBILITY INFO (BASED ON MEDIUM SIZE)		
MULLET ENDURO FORK 190MM TRAVEL 180MM		
13. FRONT SUSPENSION (TRAVEL & SAG)	190mm	25%
20. FRONT & REAR WHEEL GEOMETRY	748	715
21. REAR WHEEL MAX DIMENSIONS	29 x 2.5*	

* DISCLAIMER: We are testing many different tires to establish a clearance number that cover a wide spectrum of tires with appropriate frame clearance. However, it is impossible for us to test all tires and rim combination available on the market, so be mindful that some combinations may result in slight rubbing if higher than 66mm in actual width.

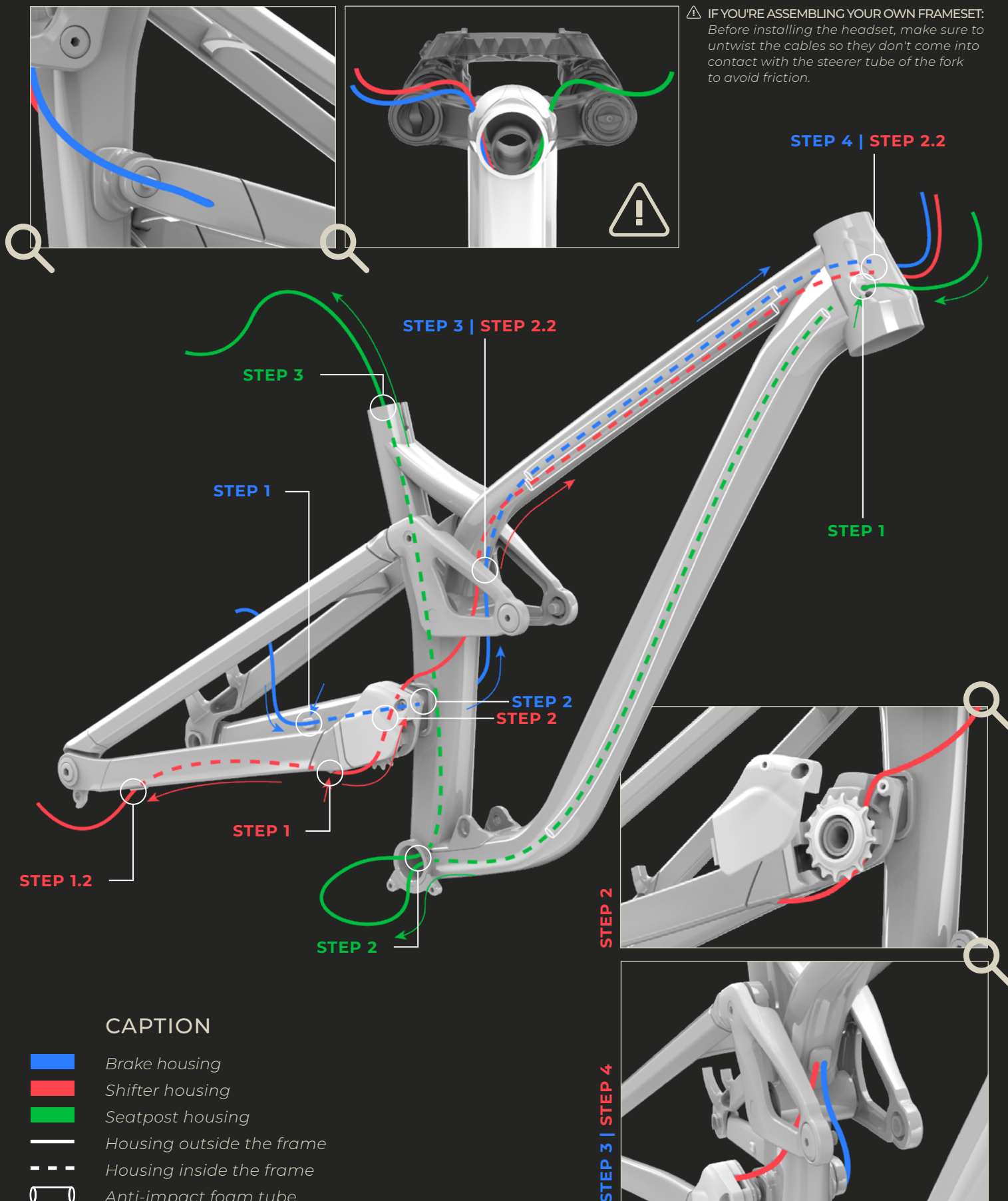
Sizes available
S | M | L | XL



STEP 2

STEP 1 | STEP 4 | STEP 5

⚠ IF YOU'RE ASSEMBLING YOUR OWN FRAMESET:
Before installing the headset, make sure to untwist the cables so they don't come into contact with the steerer tube of the fork to avoid friction.



CABLE ROUTING

BRAKE HOUSING

STEP 1 | Install the rubber cap on the cavity inside the base and pass the brake housing through the interstice.

STEP 2 | Pull out the housing through the cavity located on the exterior surface of the base.

STEP 3 | Pass the brake housing in the opening on the left of the cable guide located on the seat tube, and slide the anti-impact foam tube (40cm) on the housing through the top tube.

i Make sure that the anti-impact foam tube is only found in the top tube and not in the head tube. This will avoid friction with the steering column of the fork.

STEP 4 | Pull out the brake housing through the left upper cavity located on the head tube.

SHIFTER HOUSING

STEP 1 | Pass the speed housing through the front opening under the base.

STEP 1.2 | Take the shifter housing out through the cavity under the base, at the back. In case you have difficulty bringing out the housing, use a hook to pull it out, then install the rubber cap.

STEP 2 | Pass the speed housing under the pulley cap.

STEP 2.2 | Pass the shifter housing in the opening on the right of the cable guide located on the seat tube, and slide the anti-impact foam tube (40cm) on the housing through the top tube.

i Make sure that the anti-impact foam tube is only found in the top tube and not in the head tube. This will avoid friction with the steering column of the fork.

STEP 2.3 | Take the housing out through the left lower cavity located on the head tube.

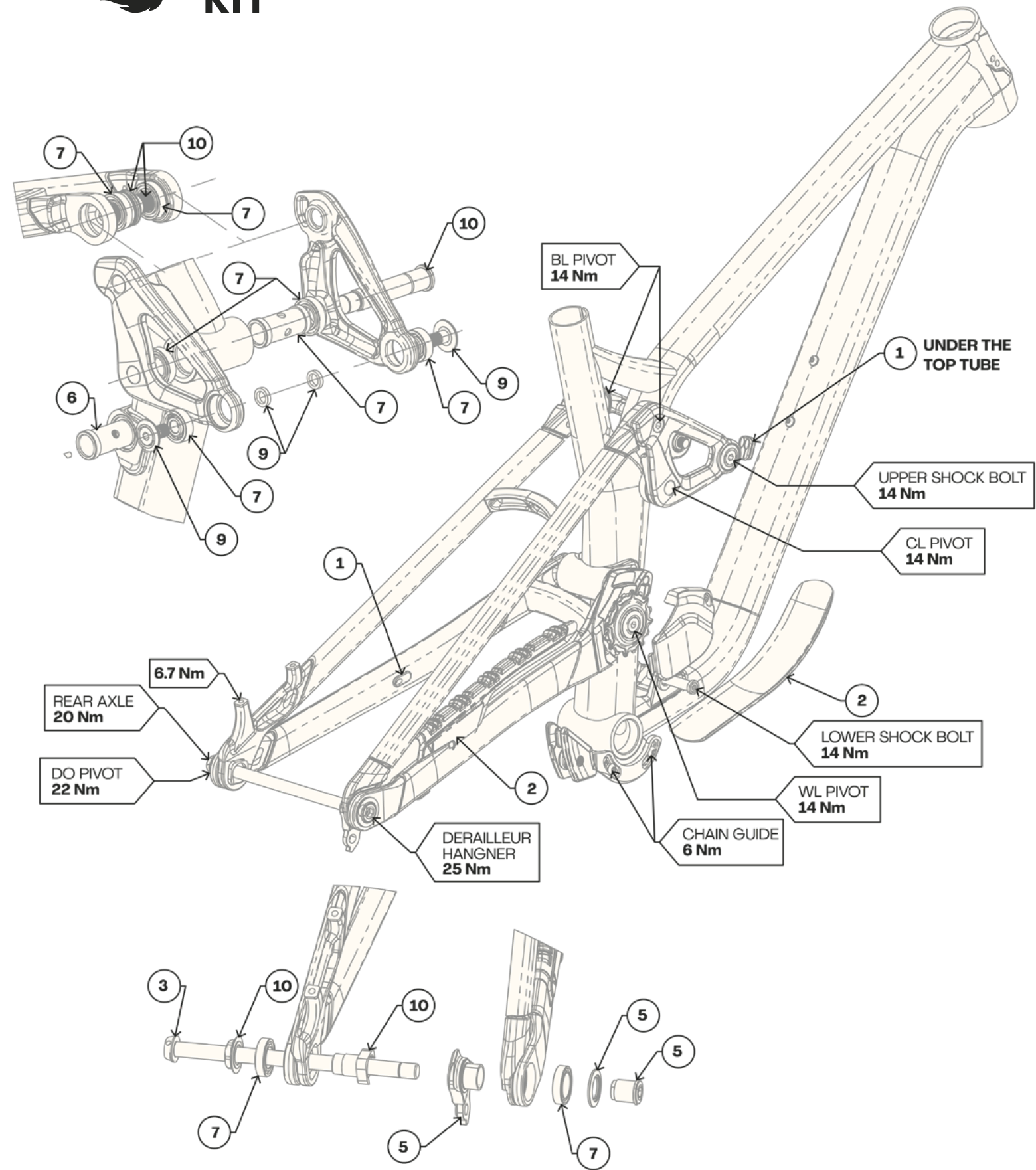
SEATPOST HOUSING

STEP 1 | Pass the seatpost housing through the upper cavity on the right side of the head tube.

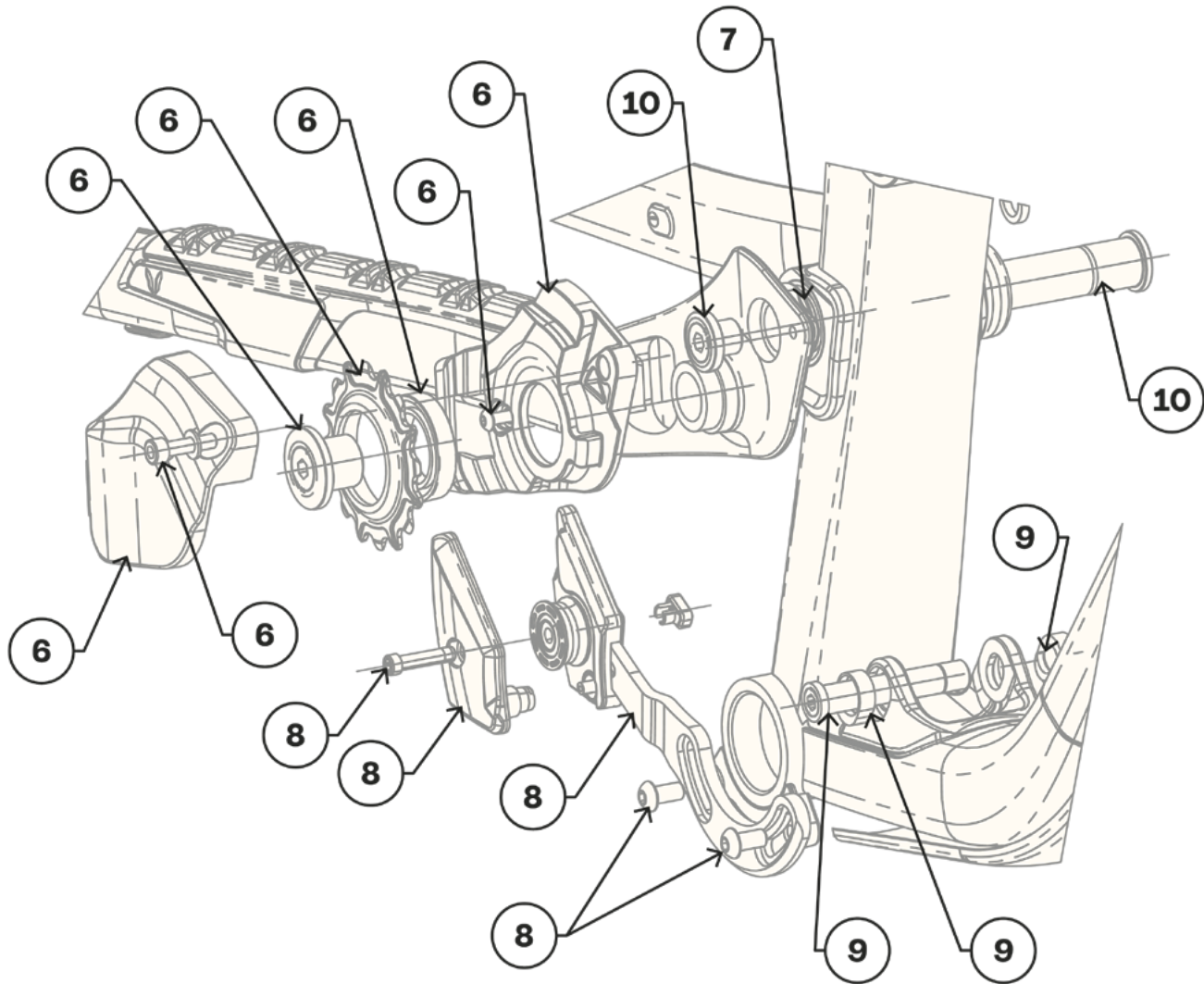
STEP 2 | Take the seatpost housing out through the bottom bracket cavity. Slide the anti-impact foam tube (60cm) on the housing all the way through the down tube. Create a loop with the housing to reintegrate it into the seat tube.

i Make sure that the anti-impact foam tube is only found in the top tube and not in the down tube. This will avoid friction with the steering column of the fork.

STEP 3 | Pull out the seatpost housing at the end of the seat tube.



CHAINSaw ALUMINUM 29 HP 2023+		
ITEMS	# SERVICE KIT	DESCRIPTION
1	KFC04501	Chainsaw Cable Guide Kit
2	KFC04502	Chainsaw Protector Kit
3	KFC04403	Rear Axle SuperBoost157*12mm UDH
4	KFC16053	Foam Kit for Internal Routing
5	KFC05602	Derailleur Hanger
6	KFC04404	Idler Assembly
7	KFC04405	Bearing kit Split Pivot HP
8	KFC04406	Lower Pulley kit
9	KFC04504	Shock Bolt
10	KFC04503	Pivotkit Shaft Kit

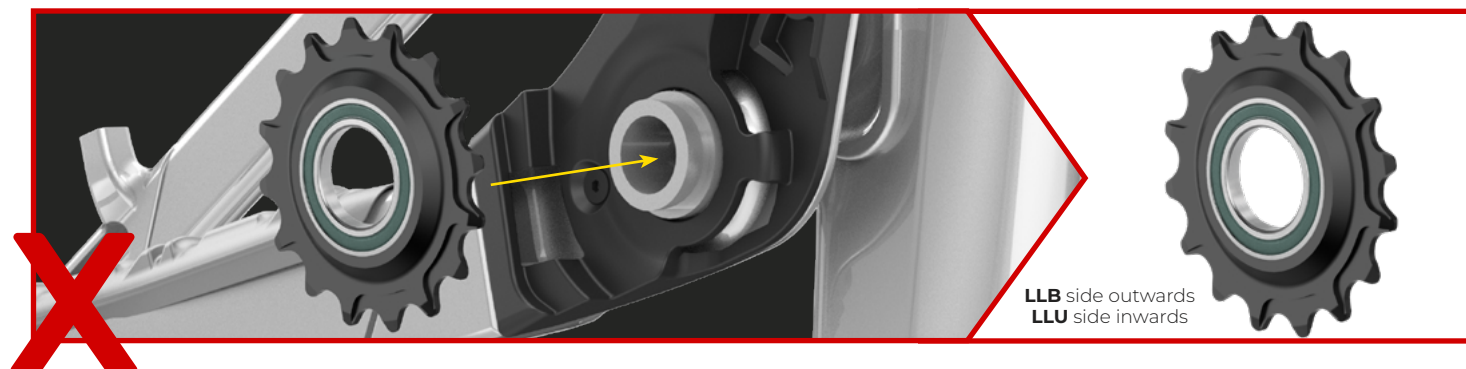
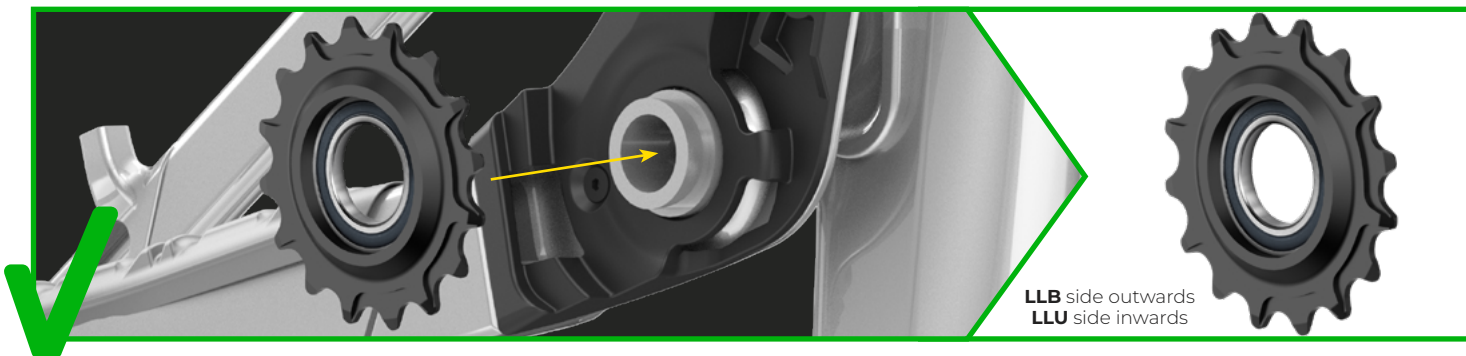


ASSEMBLY TIPS

1. Idler

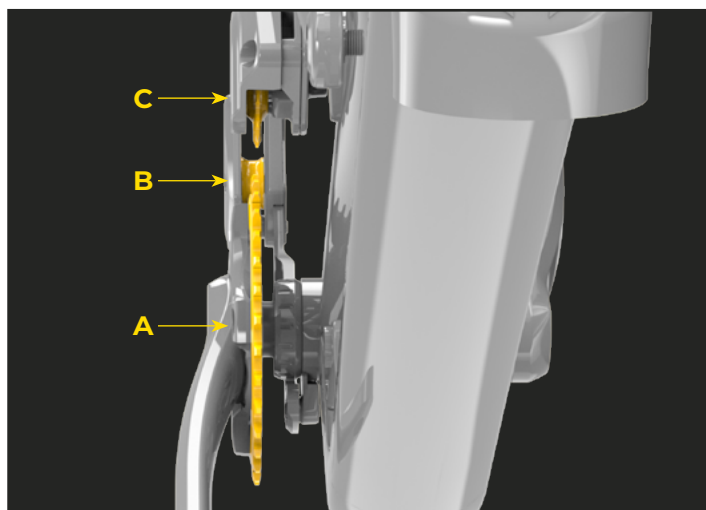
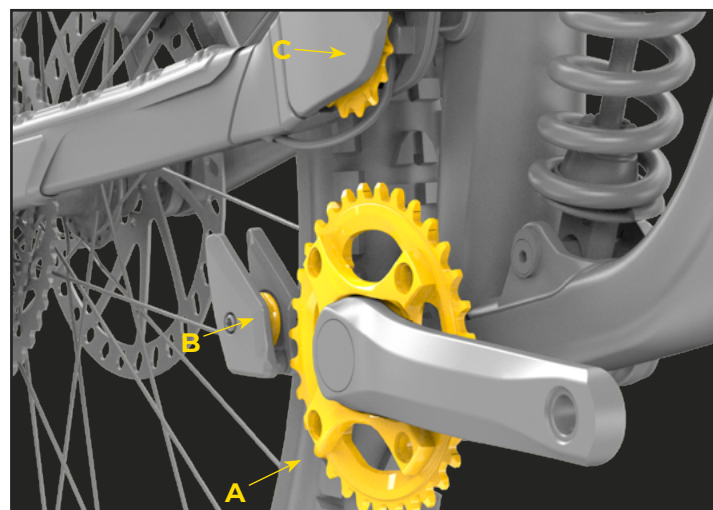
Make sure to insert the base ("flange") outward when positioning the idler.

→ The LLU side is normally green and is positioned inwards, while the LLB side, which is usually black, is positioned outwards.



2. Pulleys Alignment

Make sure that the chainring (A), the chain guide (B) and the idler (C) are aligned.

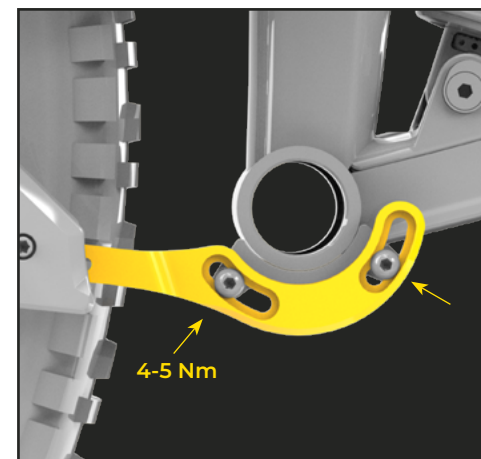


3. Chain Guide

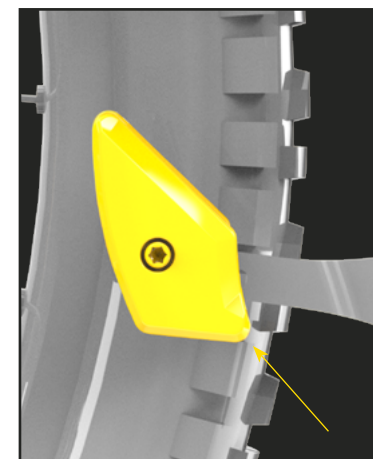
3.1 Make sure that the chain guide frame attachment is adjusted to three-quarters.

3.2 Make sure that the chain guide is adjusted as far as possible towards the rear of the bicycle.

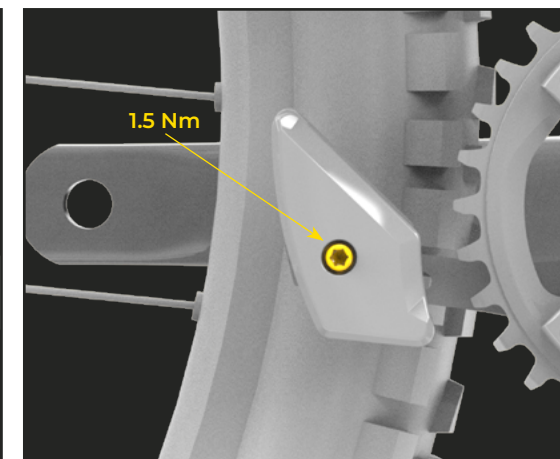
3.3 Make sure that the torque exerted on the pulley is equal to 1.5 Nm.



3.1



3.2

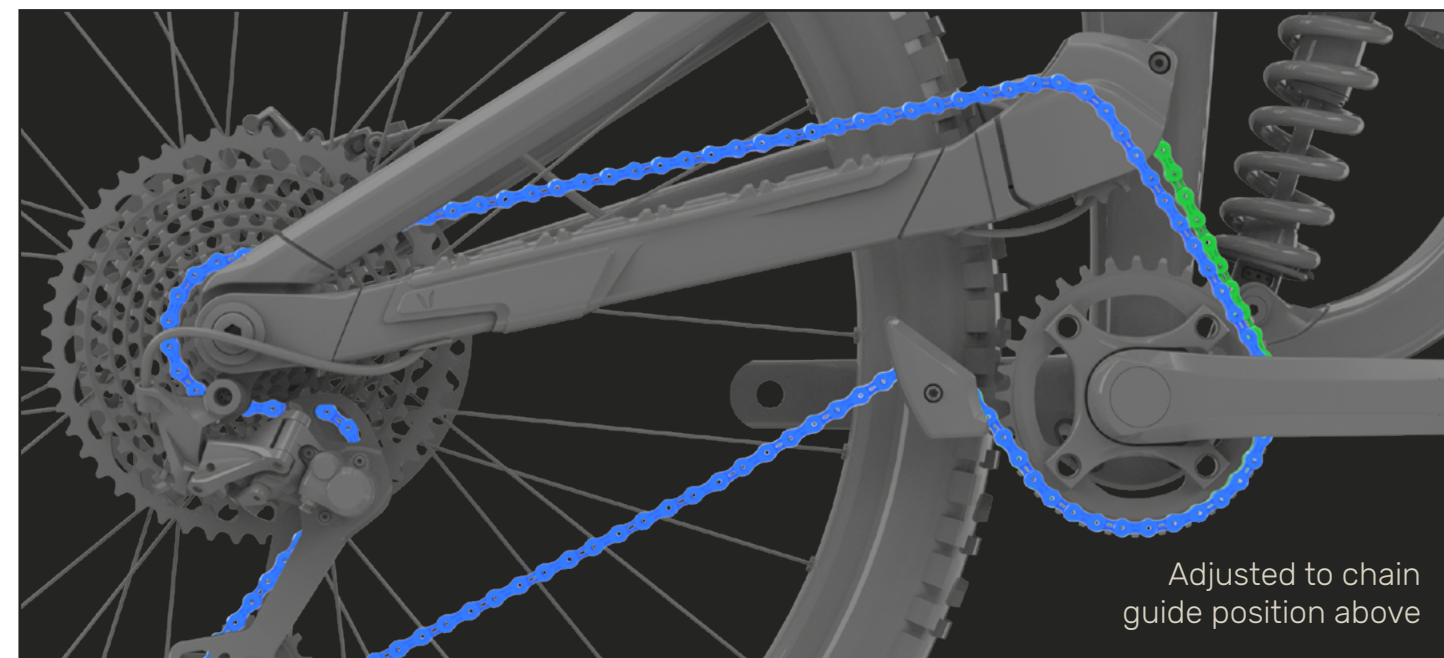


3.3

4. Chain

SMALL/MÉDIUM: Make sure the chain has 124 links.

LARGE/X-LARGE: Make sure the chain has 126 links.



Adjusted to chain guide position above



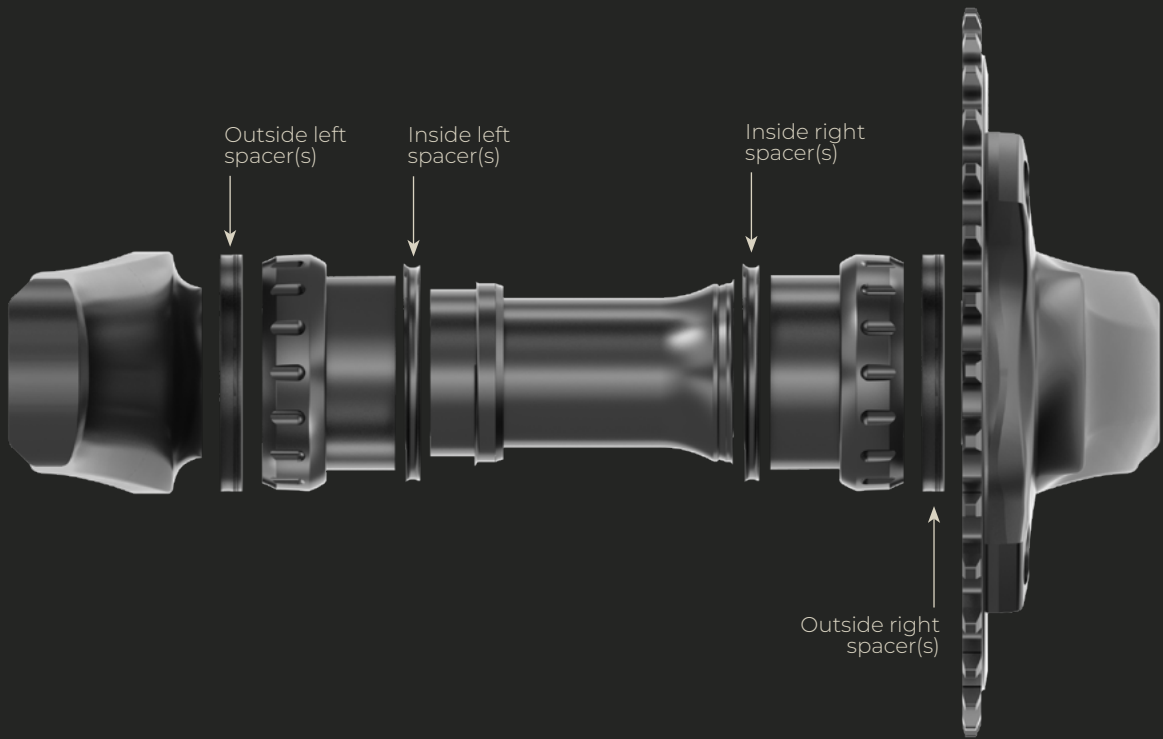
5. Crankset

Make sure to follow the following instructions for each assembly kit:

Interface and width of the frame shell (mm)		Crankset	Outside left spacer(s) (mm)	Inside left spacer(s) (mm)	Inside right spacer(s) (mm)	Outside right spacer(s) (mm)
BSA	73	Super Boost	4.5	-	-	9

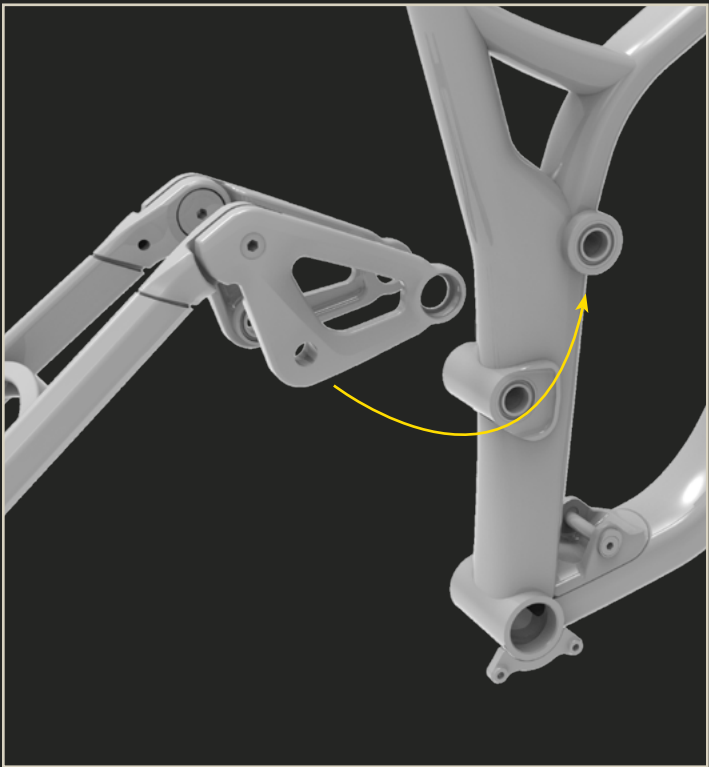
Interface and width of the frame shell (mm)		Crankset	Outside left spacer(s) (mm)	Inside left spacer(s) (mm)	Inside right spacer(s) (mm)	Outside right spacer(s) (mm)
BSA	73	Super Boost	4.5	-	-	9

Interface and width of the frame shell (mm)		Crankset	Outside left spacer(s) (mm)	Inside left spacer(s) (mm)	Inside right spacer(s) (mm)	Outside right spacer(s) (mm)
BSA	73	Super Boost	4.5	-	-	9



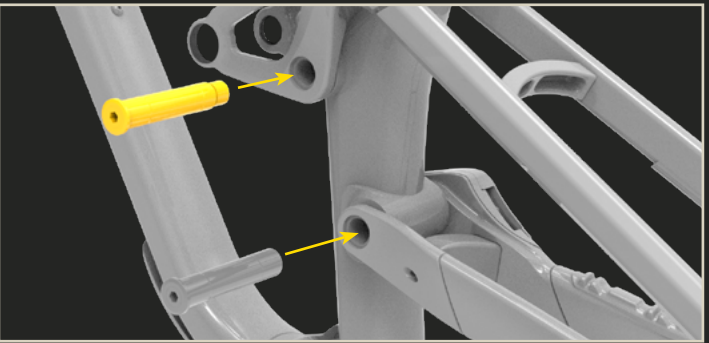
6. Upper Pivot

Make sure to loosely assemble the linkages with the seatstay before installing them on the bike.



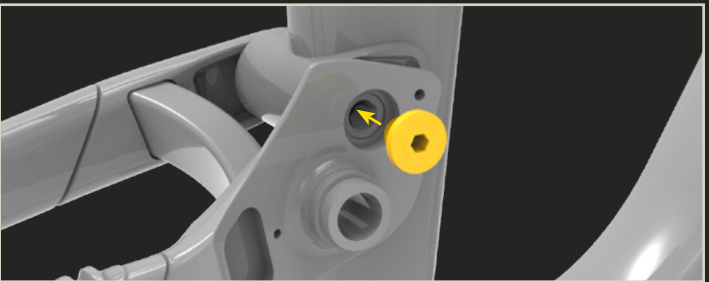
7. Upper Pivot Thread

Make sure not to get grease on the threads of the upper and lower shaft:



8. Lower Pivot

Fix the lower shaft by screwing the nut on the drive side of the bike:



9. Configuration Hi/Lo

GX 12s & SX 12s builds → The configuration will be adjusted on Low at the delivery. It is possible to modify this configuration according to your needs.



GX DH build → The configuration will be adjusted on High at the delivery. It is recommended to keep the original configuration since it is designed to have optimal geometry with the 27.5" wheel arrangement at the rear mixed with the 29" wheel arrangement at the front (Mullet).



DEVINCI WARRANTY



At Devinci, durability, performance, and peace of mind are at the core of everything we build. That’s why our warranty is designed to protect your investment and support you long after your purchase.

WHAT’S COVERED

FOR THE ORIGINAL OWNER

- **Aluminum frames:** Lifetime warranty* for the bicycle’s useful life
- **Carbon fiber frames:** Lifetime warranty* for the bicycle’s useful life
- **Paint and decals:** 1-year warranty
- **Suspension pivots (bearings, bolts, axles):** 1-year warranty

*Proof of purchase is required for all warranty claims.

COMPONENTS

All components on Devinci bikes are covered by their respective manufacturer warranties. For questions, your authorized Devinci retailer is your go-to resource. <https://www.devinci.com/en/find-a-dealer/>

OUTSIDE THE WARRANTY? WE’VE GOT YOUR BACK.

CUSTOMER ASSISTANCE PROGRAM

Accidents happen. That’s why we created the [Devinci Customer Assistance Program](#).

If your situation isn’t covered under warranty—whether it’s a crash, damage, or just bad luck—we’ll help you get back on the road or trail with a **discount on replacement parts**, based on their original retail price. This program is offered **for life**, at our discretion, and is available through our customer service team or any authorized Devinci retailer.

WHAT’S NOT COVERED

Our warranty does not apply in the following cases:

- Bike not purchased from an authorized Devinci retailer
- Improper assembly or service not performed by an authorized retailer
- Accidents, misuse, or excessive/abusive riding
- Damage from high-intensity use (racing, bike parks, improper transport, etc.)
- Structural or cosmetic modifications to the frame
- Normal wear and tear or material fatigue over time
- Costs of replacing parts that are worn out or obsolete at the time of the claim

For any questions, please contact our customer service team or your nearest Devinci retailer.

DEVINCI WARRANTY POLICY

All Devinci frames are covered by a manufacturer’s warranty against defects in materials and workmanship for a specified period, as detailed below, starting from the date of purchase. Any parts replaced or repaired under this warranty are covered for the remaining duration of the original warranty period.

The bicycle owner must provide proof of purchase to make a warranty claim.

Replacement parts are subject to availability within Devinci’s inventory at the time of the claim. In some cases, the color, features, and/or model may differ from the original part.

At Devinci’s discretion, certain costs may apply when processing a warranty replacement or repair, including:

- Shipping fees
- Additional labor costs associated with the installation or repair of a part
- Costs of replacing parts that are worn out or obsolete at the time of the claim

WARRANTY DURATION

For the original purchaser:

- Aluminum frames are covered for the lifetime of the bicycle’s useful life.
- Carbon fiber frames are covered for the lifetime of the bicycle’s useful life.
- Paint and decals are covered for one (1) year from the original date of purchase.
- Suspension frame pivots (including bearings, bolts, and axles) are covered for one (1) year from the original date of purchase.
- The components assembled on Devinci bicycles are exclusively covered by the warranties provided by their respective manufacturers, with Devinci assuming no responsibility. Please contact your authorized Devinci dealer for more details on applicable warranties.

CUSTOMER ASSISTANCE PROGRAM

For those unexpected moments when your situation is not covered under our warranty policy, Devinci’s Customer Assistance Program is here to help. Whether it’s a crash, accidental damage, or simple bad luck, this program is designed to get you back on the road or trails as quickly as possible by offering a discount on replacement parts based on their original retail price.

This program is separate from Devinci’s manufacturer warranty and is managed at Devinci’s sole discretion. It is accessible through our customer service department or any authorized Devinci retailer.

WARRANTY EXCLUSIONS

At Devinci’s discretion, the warranty may be void under the following circumstances:

- The bicycle was not purchased from an authorized Devinci retailer.
- The bicycle was not fully assembled by an authorized Devinci retailer.
- Repairs were not performed by an authorized Devinci retailer.
- The instructions in the user manual and/or technical manual were not followed.
- Recommended periodic inspections and maintenance outlined in the user manual and/or technical manual were not performed.
- Non-compatible parts were installed. Compatible parts include original components or those specified as compatible in the user manual and/or technical manual.
- Paint damage caused by the application or removal of an adhesive frame protector.

DEVINCI WARRANTY

- Damage resulted from accidental or unforeseen events, such as:
 - Accidents, impacts, or falls
 - Misuse, abnormal or excessive use, or negligence
 - Intensive use beyond the scope of normal recreational cycling
 - Improper or repeated use of ski lifts, vehicle racks, or other transportation methods
 - Use in competition or in environments/activities beyond the intended design of the bicycle
- Additional damage caused by continued use of the bicycle after an initial defect, if a warranty claim was not filed or was denied.
- The frame and/or components were altered (e.g., polishing, structural or mechanical modifications, stripping, sanding, shot peening, etc.).
- The frame size or model is inappropriate for the rider.
- Damage caused by normal wear and tear, including material fatigue over time.

LIMITATION OF LIABILITY

This warranty represents the complete and final warranty coverage for Devinci frames. Devinci does not authorize any individual, including authorized dealers, to offer any additional warranty beyond what is explicitly stated herein. Any other obligations, representations, or illustrations made by any party are not binding on Devinci and are excluded from this warranty.

Subject to applicable laws in Quebec and Canada, Devinci assumes no liability for material, bodily, or moral damages suffered by the user, purchaser, or any other party due to the use of a Devinci frame or component, except in cases of negligence or intentional misconduct by Devinci, as determined by a competent court.

Unless otherwise prohibited by applicable law, Devinci disclaims all other warranties, express or implied, including but not limited to implied warranties of merchantability or fitness for a particular purpose. Devinci's liability will not exceed the actual purchase price of the bicycle, nor will it cover any special, incidental, or consequential damages related to the bicycle.

By claiming warranty rights, the purchaser agrees that any legal proceedings shall be conducted in the judicial district of Chicoutimi, Province of Quebec, Canada.



1987



HEAD OFFICE

1555 Main
Chicoutimi (Quebec) Canada
G7K1G8

www.devinci.com